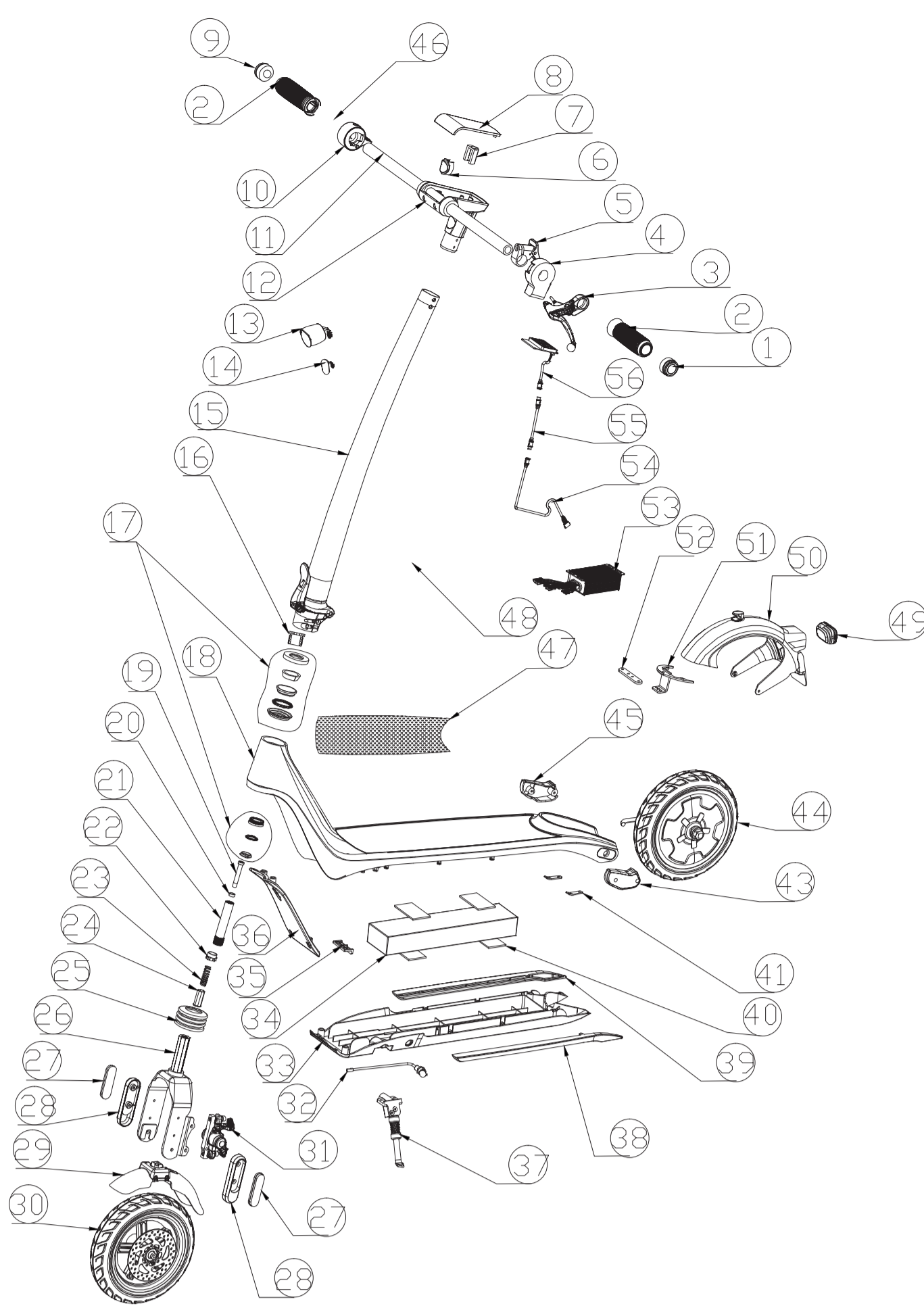


E-Scooter IX250



EXPLOSION-DRAWING / SPAREPARTS-OVERVIEW EXPLOSIONSZEICHNUNG / ERSATZTEILLISTE

| No. in explosion drawing | Item number | Description |
|--------------------------|-----------------|---|
| 1 | BW_IX250_01 | Left turn signal light |
| 2 | BW_IX250_02 | Handlebar grip |
| 3 | BW_IX250_03 | Brake lever Left with bell |
| 4 | BW_IX250_04 | Turnsignal swich |
| 5 | BW_IX250_05 | Lock |
| 7 | BW_IX250_07 | Pressing plate |
| 8 | BW_IX250_08 | Display cover |
| 9 | BW_IX250_09 | Right turn signal light |
| 10 | BW_IX250_10 | Accelerator |
| 13 | BW_IX250_13 | Front light |
| 14 | BW_IX250_14 | Front reflector |
| 15 | BW_IX250_15 | Middle tube set |
| 16 | BW_IX250_16 | Lifting screw |
| 17 | BW_IX250_17 | Bowl set |
| 19 | BW_IX250_19 | Hollow screw |
| 20 | BW_IX250_20 | Rubber gasket |
| 21 | BW_IX250_21 | Standpipe |
| 22 | BW_IX250_22 | Step casing |
| 23 | BW_IX250_23 | Shock absorbing suspension |
| 24 | BW_IX250_24 | Octagonal sleeve |
| 25 | BW_IX250_25 | Dustproof cover |
| 26 | BW_IX250_26 | Frontfork set |
| 27 | BW_IX250_27 | Side reflector |
| 28 | BW_IX250_28 | Cover set of front fork |
| 29 | BW_IX250_29 | Front fender |
| 30 | BW_IX250_30 | Front Wheel |
| 31 | BW_IX250_31 | Disc brake system |
| 32 | BW_IX250_32 | Charge port |
| 33 | BW_IX250_33 | Bottom plate |
| 34 | BW_IX250_34 | Battery 36V 10Ah |
| 35 | BW_IX250_35 | Pressing block |
| 36 | BW_IX250_36 | Front wall |
| 37 | BW_IX250_37 | Kickstand |
| 38 | BW_IX250_38 | Left atmosphere light cover |
| 39 | BW_IX250_39 | Right atmosphere light cover |
| 40 | BW_IX250_40 | EVA sticker |
| 41 | BW_IX250_41 | Rear fork reinforcing piece |
| 42 | BW_IX250_42 | Charger 42V 1.5A |
| 43 | BW_IX250_43 | Left cover set of rear fork |
| 44 | BW_IX250_44 | Motor |
| 45 | BW_IX250_45 | Right cover set of rear fork |
| 46 | BW_IX250_46 | Electric brake handle |
| 47 | BW_IX250_47 | Pedal rubber |
| 48 | BW_IX250_48 | Brake line |
| 49 | BW_IX250_49 | Rear light |
| 50 | BW_IX250_50 | Rear fender |
| 52 | BW_IX250_52 | Rear fender fixation plate |
| 53 | BW_IX250_53 | Controller |
| 54 | BW_IX250_54 | Main cable connect controller |
| 55 | BW_IX250_55 | Main cable bundle adapter with spring cover |
| 56 | BW_IX250_56 | Bluetooth board |
| Not in drawing | BW_IX250_57 | Airtag cover |
| Not in drawing | BW_IX250_58 | Disk for brake |
| Not in drawing | BW_IX250_59 | Screw (set) |
| Not in drawing | BW_IX250_62 | Handlebar set |
| Not in drawing | BW_IX250_63 | Screw on part 41 |
| Not in drawing | BW_IX250_64 | Short screw on part 43 and part 45 |
| Not in drawing | BW_IX250_65 | Long screw on part 43 and part 46 |
| Not in drawing | BW_IX250_66 | Screw on part 28 |
| Not in drawing | BW_IX250_67 | Screw and washer on part 31 |
| Not in drawing | BW_IX250_68 | Spring on part 48 |
| Not in drawing | BW_IX250_69 | Cable cover on part 48 |
| Not in drawing | BW_IX250_70 | Wire grommet |
| Not in drawing | BW_IX250_71 | Screw on part 37 |
| Not in drawing | BW_IX250_72 | Washer on part 37 |
| Not in drawing | BW_IX250_73 | Screw on part 33 and part 36 |
| Not in drawing | BW_IX250_74 | Screw on part 50 (inner) |
| Not in drawing | BW_IX250_75 | Plastic part on the part 50 (inner) |
| Not in drawing | BW_IX250_76 | Screw on part 50 |
| Not in drawing | BW_IX250_77 | Screw on part 13 and part 14 |
| Not in drawing | BW_IX250_78 | Washer on part 14 |
| Not in drawing | BW_IX250_79 | Hook on the part 15 |
| Not in drawing | BW_IX250_80 | Short screw on part 79 |
| Not in drawing | BW_IX250_81 | Long screw on part 80 |
| Not in drawing | BW_IX250_82 | Screw on part 15 |
| Not in drawing | BW_IX250_83 | Washer on part 82 |
| Not in drawing | BW_IX250_84 | Screw on part 29 |
| Not in drawing | BW_IX250_85 | Screw on part 39 and part 39 |
| Not in drawing | BW_IX250_86 | Cable cover on part 54 |
| Not in drawing | BW_IX250_87 | Screw on part 53 |
| Not in drawing | BW_IX250_88 | Screw on part 30 |
| Not in drawing | BW_IX250_89 | Washer on part 30 |
| Not in drawing | BW_IX250_90 | Sleeve on part 30 |
| Not in drawing | BW_IX250_91 | Screw on brake disc |
| Not in drawing | BW_IX250_92 | Screw on part 50 |
| Not in drawing | BW_IX250_93 | Screw on part 49 |
| Not in drawing | BW_IX250_94 | Screw between part 25 and part 26 |
| Not in drawing | BW_IX250_95 | Screw between part 01 and part 09 |
| Not in drawing | BW_IX250_96 | Screw on part 8 |
| Not in drawing | BW_IX250_97 | Screw on part 56 |
| Not in drawing | BW_IX250_98 | Grip on part 1 and part 9 |
| Not in drawing | BW_IX250_99 | Screw on part 03 and part 46 |
| Not in drawing | BW_IX250_100 | Screw on part 4 |
| Not in drawing | BW_IX250_101 | Screw on part 5 |
| Not in drawing | BW_IX250_102 | Screw on part 10 |
| Not in drawing | BW_IX250_103 | Wire on part 01 and part 09 |
| Not in drawing | BW_IX250_104 | Screw on part 35 |
| Not in drawing | BW_IX250_105 | Washer on part 35 |
| Not in drawing | BW_IX250_106 | Screw on part 52 |
| Not in drawing | BW_IX250_107 | Screw on part 51 |
| Not in drawing | BW_IX250_108 | Cap for charging socket |
| Not in drawing | BW_IX250_109 | Tube 8 1/2 x 2 |
| Not in drawing | BW_IX250_110 | Tire |
| Not in drawing | BW_IX250_Manual | Manual |