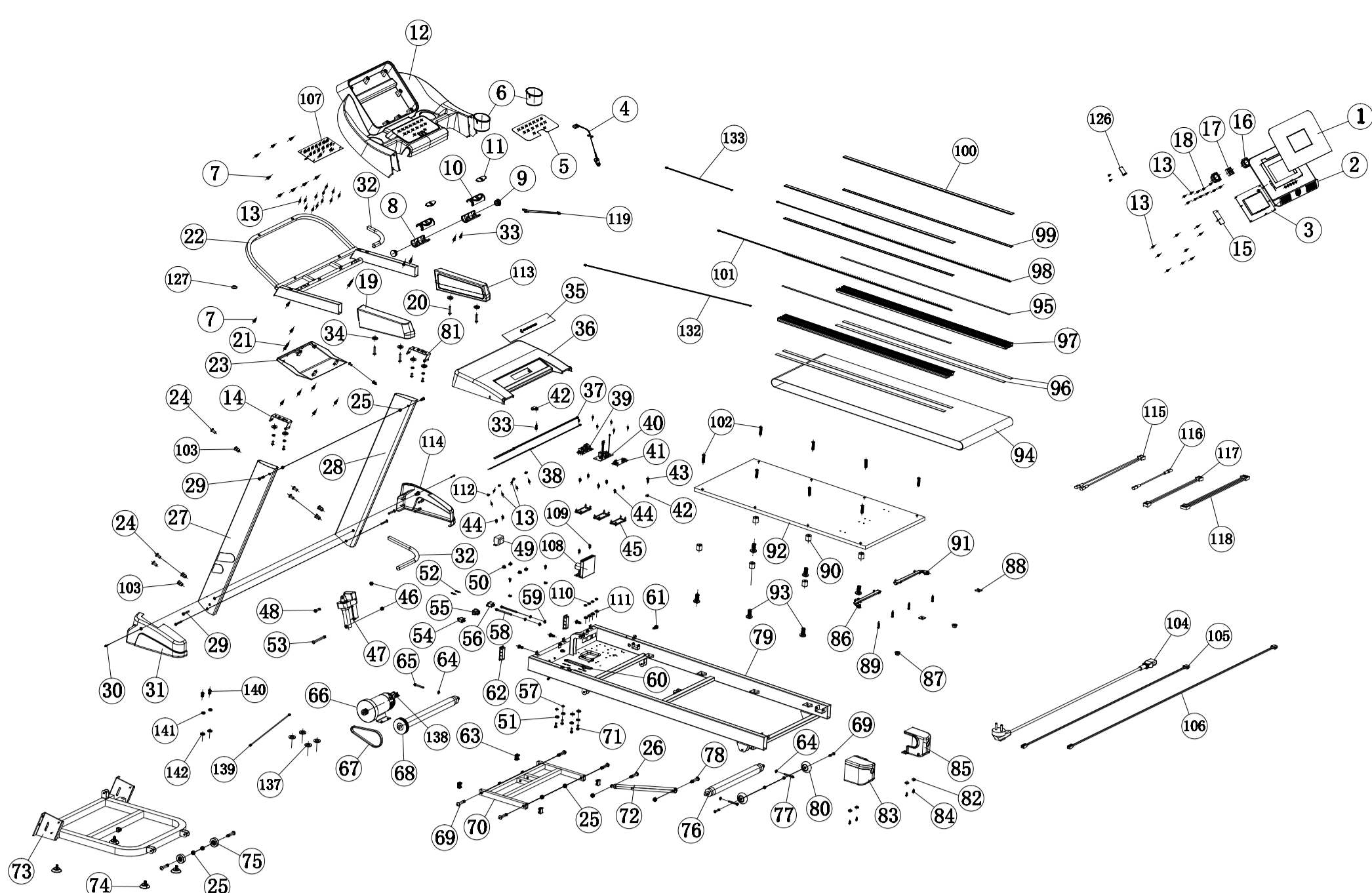


Treadmill F37s


EXPLOSION-DRAWING / SPAREPARTS-OVERVIEW
EXPLOSIONSZEICHNUNG / ERSATZTEILLISTE

No. in explosion drawing	Item No.	Description
1	SP_F37s_01	Display overlay
2	SP_F37s_02	Display housing
3	SP_F37s_03	Display board
4	SP_F37s_04	Safety key
5	SP_F37s_05	Key board overlay
6	SP_F37s_06	Cup holder
7	SP_F37s_07	Cross recessed oval head tapping screw ST4x16
8	SP_F37s_08	Pulse cover bottom
9	SP_F37s_09	Handlebar end cap
10	SP_F37s_10	Pulse cover upper
11	SP_F37s_11	Pulse sensor
12	SP_F37s_12	Computer upper cover
13	SP_F37s_13	Cross recessed oval head tapping screw ST3x8
14	SP_F37s_14	Left supporting tube plate
15	SP_F37s_15	Bluetooth music module
16	SP_F37s_16	Speaker
17	SP_F37s_17	Fan
18	SP_F37s_18	Cross recessed oval head tapping screw ST3x14
19	SP_F37s_19	Handle foam
20	SP_F37s_20	Truss head tapping screw M6x25
21	SP_F37s_21	Cross recessed oval head tapping screw ST4x30
22	SP_F37s_22	Handlebar frame
23	SP_F37s_23	Computer bottom cover
24	SP_F37s_24	Hexagon socket oval head bolt M8x16
25	SP_F37s_25	Nylon nut M8
26	SP_F37s_26	Hexagon socket oval head bolt M8x30
27	SP_F37s_27	Left supporting tube
28	SP_F37s_28	Right supporting tube
29	SP_F37s_29	Hexagon socket oval head bolt M8x50
30	SP_F37s_30	Truss head tapping screw M5x25
31	SP_F37s_31	Left base frame cover
32	SP_F37s_32	Corrugated pipe
33	SP_F37s_33	Cross recessed oval head tapping screw ST3x12
34	SP_F37s_34	Washer D6x16
35	SP_F37s_35	Logo overlay
36	SP_F37s_36	Motor cover
37	SP_F37s_37	Logo LED board
38	SP_F37s_38	Motor cover LED board
39	SP_F37s_39	EMI filter
40	SP_F37s_40	LED control board
41	SP_F37s_41	LED power board
42	SP_F37s_42	R shape fastener
43	SP_F37s_43	Cross recessed oval head tapping screw ST4.2x16
44	SP_F37s_44	Truss head tapping screw M4x8
45	SP_F37s_45	PCB plastic plate
46	SP_F37s_46	Nylon nut M10
47	SP_F37s_47	Incline motor
48	SP_F37s_48	Hexagon socket oval head bolt M10x40
49	SP_F37s_49	Choke
50	SP_F37s_50	Flange nut M8
51	SP_F37s_51	Spring washer D8
52	SP_F37s_52	Truss head tapping screw M3x8
53	SP_F37s_53	Hexagon socket oval head bolt M10x105
54	SP_F37s_54	Overload button
55	SP_F37s_55	Power switch
56	SP_F37s_56	Power socket
57	SP_F37s_57	Washer D8x20
58	SP_F37s_58	Hexagon socket oval head bolt M8x80
59	SP_F37s_59	Flanut M8
60	SP_F37s_60	Cable grommet
61	SP_F37s_61	Truss head tapping screw M5x10
62	SP_F37s_62	End cap 30x80mm
63	SP_F37s_63	End cap 20x30mm
64	SP_F37s_64	Washer D8x16
65	SP_F37s_65	Hexagon socket oval head bolt M8x45
66	SP_F37s_66	Motor
67	SP_F37s_67	Motor belt
68	SP_F37s_68	Front roller
69	SP_F37s_69	Hexagon socket oval head bolt M8x40
70	SP_F37s_70	Incline frame
71	SP_F37s_71	Hexagon socket oval head bolt M8x25
72	SP_F37s_72	Gas spring
73	SP_F37s_73	Base frame
74	SP_F37s_74	Foot pad
75	SP_F37s_75	Transportation wheel
76	SP_F37s_76	Rear roller
77	SP_F37s_77	Hexagon socket oval head bolt M8x55
78	SP_F37s_78	Hexagon socket oval head bolt M8x44
79	SP_F37s_79	Main frame
80	SP_F37s_80	Rear transportation wheel
81	SP_F37s_81	Right supporting tube plate
82	SP_F37s_82	Washer D4x14
83	SP_F37s_83	Left end cover
84	SP_F37s_84	Truss head tapping screw M4x16
85	SP_F37s_85	Right end cover
86	SP_F37s_86	Left lubrication tube
87	SP_F37s_87	Flanut M6
88	SP_F37s_88	Eva tape 28x28
89	SP_F37s_89	Cross recessed oval head tapping screw ST4x12
90	SP_F37s_90	Chusion
91	SP_F37s_91	Right lubrication tube
92	SP_F37s_92	Runnig board
93	SP_F37s_93	Truss head tapping screw M6x16
94	SP_F37s_94	Running belt
95	SP_F37s_95	Tape 3M
96	SP_F37s_96	Eva tape 10x18
97	SP_F37s_97	Side rail
98	SP_F37s_98	Right side LED board
99	SP_F37s_99	LED inner rail cover
100	SP_F37s_100	LED outer rail cover
101	SP_F37s_101	Left side LED board
102	SP_F37s_102	Truss head tapping screw M6x35
103	SP_F37s_103	Rivet nut
104	SP_F37s_104	Power cord
105	SP_F37s_105	Computer control cable
106	SP_F37s_106	Main control cable
107	SP_F37s_107	Key board
108	SP_F37s_108	Electric controller
109	SP_F37s_109	Truss head tapping screw M5x16
110	SP_F37s_110	Spring washer D4
111	SP_F37s_111	Washer D4x8
112	SP_F37s_112	Washer D3
113	SP_F37s_113	Handle foam right
114	SP_F37s_114	Right base frame cover
115	SP_F37s_115	Wire for power switch
116	SP_F37s_116	Wire for overload button
117	SP_F37s_117	Wire for EMI filter
118	SP_F37s_118	Wire for LED control board
119	SP_F37s_119	Wire for pulse sensor
Not in drawing	SP_F37s_121	Display set
Not in drawing	SP_F37s_122	Console set
Not in drawing	SP_F37s_123	Side rail set left
Not in drawing	SP_F37s_124	Side rail set right
126	SP_F37s_126	Puls circuit board
127	SP_F37s_127	Rubber ring
132	SP_F37s_132	Power board wire long
133	SP_F37s_133	Power board wire short
137	SP_F37s_137	Round spacer
139	SP_F37s_139	Sensor for Motor
140	SP_F37s_140	Screw M5 x 7
141	SP_F37s_141	Spring washer D5
142	SP_F37s_142	Flat washer D5 x 10