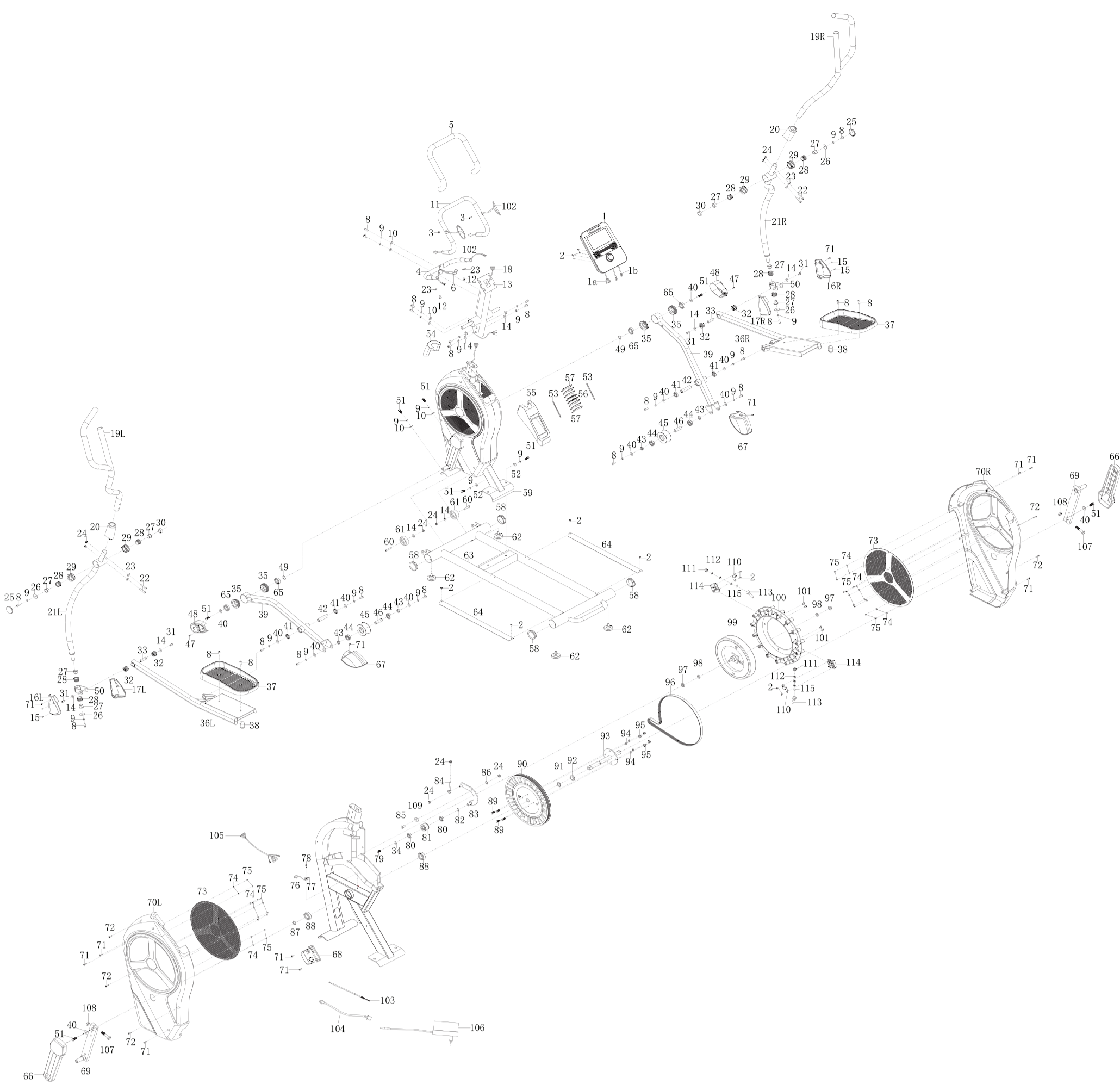


Crosstrainer Sky F2



EXPLOSION-DRAWING / SPAREPARTS-OVERVIEW EXPLOSIONSZEICHNUNG / ERSATZTEILLISTE

No. In explosion drawing	Item No.	Description
1	SP_SKY_F2_01	Computer
2	SP_SKY_F2_02	Bolt M5 x 10 x D10
3	SP_SKY_F2_03	Bolt ST4 x 19 x D11
4	SP_SKY_F2_04	Middle handlebar join
5	SP_SKY_F2_05	Grip foam
6	SP_SKY_F2_06	Trunk wire
8	SP_SKY_F2_08	Bolt M8 x 20 x S5
9	SP_SKY_F2_09	Spring washer D8
10	SP_SKY_F2_10	Arc washer D8 x D20 x 2 x R30
11	SP_SKY_F2_11	Middle handlebar
12	SP_SKY_F2_12	Bolt M8 x 16 x S5
13	SP_SKY_F2_13	Handlebar post
14	SP_SKY_F2_14	Washer D8 x D20 x 2
15	SP_SKY_F2_15	Bolt ST3 x 10 x D5.6
16	SP_SKY_F2_16L	Pedal arm cover left
16	SP_SKY_F2_16R	Pedal arm cover right
17	SP_SKY_F2_17L	Pedal arm cover left
17	SP_SKY_F2_17R	Pedal arm cover right
18	SP_SKY_F2_18	Trunk wire 1
19	SP_SKY_F2_19L	Handlebar left
19	SP_SKY_F2_19R	Handlebar right
20	SP_SKY_F2_20	Handlebar cover
21	SP_SKY_F2_21L	Swing bar left
21	SP_SKY_F2_21R	Swing bar right
22	SP_SKY_F2_22	Bolt M8 x 40 x 15 x S5
23	SP_SKY_F2_23	Arc washer D8 x D20 x 2 x R16
24	SP_SKY_F2_24	Nylon nut M8 x H7.5 x S13
25	SP_SKY_F2_25	End cap
26	SP_SKY_F2_26	Washer D8 x D32 x 2
27	SP_SKY_F2_27	Bushing D19
28	SP_SKY_F2_28	Bushing D32
29	SP_SKY_F2_29	Bushing
30	SP_SKY_F2_30	Rubber bushing
31	SP_SKY_F2_31	Bolt M8 x 16 x S5
32	SP_SKY_F2_32	Bushing D28 x D14
33	SP_SKY_F2_33	Bushing D14 x 45.2
34	SP_SKY_F2_34	Washer D6 x D16 x 1.5
35	SP_SKY_F2_35	Bearing holder D60 x 16.6
36	SP_SKY_F2_36L	Pedal arm left
36	SP_SKY_F2_36R	Pedal arm right
37	SP_SKY_F2_37	Pedal
38	SP_SKY_F2_38	End cap
39	SP_SKY_F2_39	Swing bar join
40	SP_SKY_F2_40	Washer D8 x D22 x 2
41	SP_SKY_F2_41	Bearing 6804
42	SP_SKY_F2_42	Pedal rod
43	SP_SKY_F2_43	Bushing D22
44	SP_SKY_F2_44	Bearing 6003
45	SP_SKY_F2_45	Roller
46	SP_SKY_F2_46	Wheel rod
47	SP_SKY_F2_47	Bolt M4 x 10 x D8
48	SP_SKY_F2_48	Decorating cover
49	SP_SKY_F2_49	Wave washer D20 x D25 x 0.3
50	SP_SKY_F2_50	Swing bar joins
51	SP_SKY_F2_51	Bolt M8 x 20 x S13
52	SP_SKY_F2_52	Washer D8 x D16 x 1.5
53	SP_SKY_F2_53	Fan connector
54	SP_SKY_F2_54	Front cover
55	SP_SKY_F2_55	Rear cover
56	SP_SKY_F2_56	Fan blade 1
57	SP_SKY_F2_57	Fan blade 2
58	SP_SKY_F2_58	End cap
60	SP_SKY_F2_60	Bolt M8 x 42 x 15 x S5
61	SP_SKY_F2_61	Transportation wheel
62	SP_SKY_F2_62	Foot pad
63	SP_SKY_F2_63	Guide rail
64	SP_SKY_F2_64	Aluminum sheet
65	SP_SKY_F2_65	Bearing R12
66	SP_SKY_F2_66	Crank cover
67	SP_SKY_F2_67	Roller cover
68	SP_SKY_F2_68	Motor 5V
69	SP_SKY_F2_69	Crank
70	SP_SKY_F2_70L	Chain cover left
70	SP_SKY_F2_70R	Chain cover right
71	SP_SKY_F2_71	Bolt ST4.2 x 16 x D8
72	SP_SKY_F2_72	Bolt ST4.2 x 19 x D8
73	SP_SKY_F2_73	Steel plate
74	SP_SKY_F2_74	Washer D4 x D9 x 1
75	SP_SKY_F2_75	Bolt ST3.0 x 6 x D5.6
76	SP_SKY_F2_76	Sensor
77	SP_SKY_F2_77	Sensor holder
78	SP_SKY_F2_78	Bolt ST4.2 x 16 x D8
79	SP_SKY_F2_79	Bolt M6 x 10 x S10
80	SP_SKY_F2_80	Bearing 6001
81	SP_SKY_F2_81	Idler
82	SP_SKY_F2_82	Wave washer D12 x D15.5 x 0.3
83	SP_SKY_F2_83	Idler connecting rod
84	SP_SKY_F2_84	Idler screw
85	SP_SKY_F2_85	Bolt M8 x 20 x S14
86	SP_SKY_F2_86	Washer D12 x D17 x 0.5
87	SP_SKY_F2_87	C-clip D20
88	SP_SKY_F2_88	Bearing 6004
89	SP_SKY_F2_89	Bolt M6 x 16 x S10
90	SP_SKY_F2_90	Belt plate D304
91	SP_SKY_F2_91	Bushing D20.1 x D25 x 4.0
92	SP_SKY_F2_92	Wave washer D21 x D27 x 0.3
93	SP_SKY_F2_93	Axle
94	SP_SKY_F2_94	Spring washer D6
95	SP_SKY_F2_95	Nylon nut M6 x H6 x S10
96	SP_SKY_F2_96	Belt
97	SP_SKY_F2_97	Nut M10 x 1 x H8 x S15
98	SP_SKY_F2_98	Nut M10 x 1 x H5 x S17
99	SP_SKY_F2_99	Flywheel
100	SP_SKY_F2_100	Fan
101	SP_SKY_F2_101	Bolt M6 x 10 x S4
102	SP_SKY_F2_102	Handle pulse
103	SP_SKY_F2_103	Electric control trimming line
104	SP_SKY_F2_104	Extension trunk wire
105	SP_SKY_F2_105	Trunk wire 2
106	SP_SKY_F2_106	Adapter
107	SP_SKY_F2_107	Bolt M10 x 50 x 20 x S17
108	SP_SKY_F2_108	Nut M10 x H7 x S17
109	SP_SKY_F2_109	Washer D8 x D25 x 2
110	SP_SKY_F2_121	Wrench S5
111	SP_SKY_F2_122	Spanner S13-14-15
112	SP_SKY_F2_123	Lamp set 15V 80mAh
Not in drawing	SP_SKY_F2_Carton	Carton for Sky F2 1310 x 380 x 665
Not in drawing	SP_SKY_F2_Manual	Manual
Not in drawing	SP_SKY_F2_Screw set	Screw set