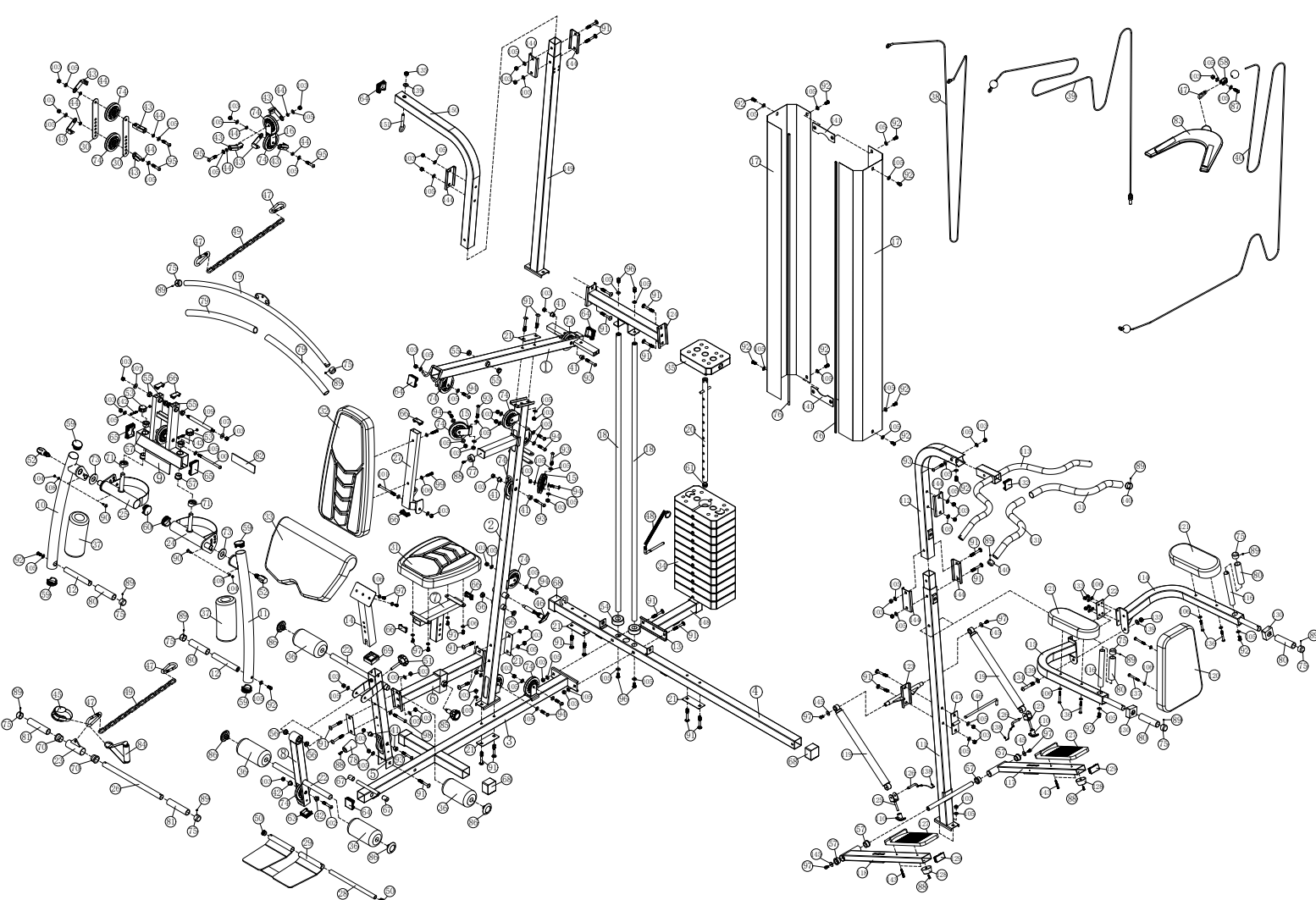


EXPLOSION-DRAWING / SPAREPARTS-OVERVIEW

EXPLOSIONSZEICHNUNG / ERSATZTEILLISTE



SPORTSTECH

POWER TOWER HGX250
KRAFTSTATION HGX250

Number in explosion drawing	Item number	Description
1	SP_HGX100-HGX250_01	Upper frame
2	SP_HGX100-HGX250_02	Front vertical frame
3	SP_HGX100-HGX250_03	Basic frame
4	SP_HGX250_04	Rear stabilizer
5	SP_HGX100-HGX250_05	Leg pull holder
6	SP_HGX100-HGX250_06	Seat cushion carrier
7	SP_HGX100-HGX250_07	Seat cushion adjusting frame
8	SP_HGX100-HGX250_08	Leg pull
9	SP_HGX100-HGX250_09	Front subframe
10	SP_HGX100-HGX250_10	Right sideboom
11	SP_HGX100-HGX250_11	Left sideboom
12	SP_HGX100-HGX250_12	Handle
13	SP_HGX100-HGX250_13	Holder
14	SP_HGX100-HGX250_14	Armcurl pad
15	SP_HGX100-HGX250_15	Swivel bracket for pulley
16	SP_HGX100-HGX250_16	Holder for pulley on both sides
17	SP_HGX100-HGX250_17	Cover for weights
18	SP_HGX100-HGX250_18	Guide rod
19	SP_HGX100-HGX250_19	Lat bar
20	SP_HGX100-HGX250_20	Shift rod
21	SP_HGX100-HGX250_21	Holder 45x120x2
22	SP_HGX100-HGX250_22	Foam tube
23	SP_HGX100-HGX250_23	Arm curl bar
24	SP_HGX100-HGX250_24	Left side boom adjustment frame
25	SP_HGX100-HGX250_25	Right side boom adjustment frame
26	SP_HGX100-HGX250_26	Short rod
27	SP_HGX100-HGX250_27	Back pad holder
28	SP_HGX100-HGX250_28	Footplate tube
29	SP_HGX100-HGX250_29	Footplate
30	SP_HGX100-HGX250_30	Double-sided holder for pulley
31	SP_HGX100-HGX250_31	Seatcushion
32	SP_HGX100-HGX250_32	Backrest cushion
33	SP_HGX100-HGX250_33	Arm curl pad
34	SP_HGX100-HGX250_34	Weight plate
35	SP_HGX100-HGX250_35	Weight bar
36	SP_HGX100-HGX250_36	Foam roller for leg pull
37	SP_HGX100-HGX250_37	Foam roller for side arms
38	SP_HGX100-HGX250_38	Cable for side arms
39	SP_HGX100-HGX250_39	Upper cable
40	SP_HGX100-HGX250_40	Lower cable
41	SP_HGX100-HGX250_41	Rifle L=15
42	SP_HGX100-HGX250_42	Rifle L=13
43	SP_HGX100-HGX250_43	Cable tie
44	SP_HGX100-HGX250_44	Cable sleeve
45	SP_HGX100-HGX250_45	Ankle strap
46	SP_HGX100-HGX250_46	T-shaped locking pin
47	SP_HGX100-HGX250_47	Hook
48	SP_HGX100-HGX250_48	Fastening pin
49	SP_HGX100-HGX250_49	Membered chain 15
50	SP_HGX100-HGX250_50	End cap D25x1,5
51	SP_HGX100-HGX250_51	Lock button
52	SP_HGX100-HGX250_52	Long locking pin
53	SP_HGX100-HGX250_53	End cap
54	SP_HGX100-HGX250_54	Rubber buffers
55	SP_HGX100-HGX250_55	Rifle D25xD22xD16x10
56	SP_HGX100-HGX250_56	Rifle D25xD20xD9,9x10
57	SP_HGX100-HGX250_57	Rifle D33xD29xD20
58	SP_HGX100-HGX250_58	Clasp
59	SP_HGX100-HGX250_59	End cap D50x1,5
60	SP_HGX100-HGX250_60	End cap D50x2
61	SP_HGX100-HGX250_61	End cap
63	SP_HGX100-HGX250_63	End cap 45x1,5
64	SP_HGX100-HGX250_64	End cap 50x1,5
65	SP_HGX100-HGX250_65	End cap 50x70x2
66	SP_HGX100-HGX250_66	End cap 25x50x1,5
67	SP_HGX100-HGX250_67	End cap D16
68	SP_HGX100-HGX250_68	End cap D25
69	SP_HGX100-HGX250_69	Shell 50x45
70	SP_HGX100-HGX250_70	Rifle D38xD27x26
71	SP_HGX100-HGX250_71	Distance
73	SP_HGX100-HGX250_73	Washer
74	SP_HGX100-HGX250_74	Pulley D97
75	SP_HGX100-HGX250_75	End cap D25
76	SP_HGX100-HGX250_76	Cover for weights pile
77	SP_HGX100-HGX250_77	Rubber buffers
78	SP_HGX100-HGX250_78	Rubber buffers
79	SP_HGX100-HGX250_79	Handle D24,5xD31x460
80	SP_HGX100-HGX250_80	Handle D24,5xD31x120
81	SP_HGX100-HGX250_81	Handle D24xD31x150
82	SP_HGX100-HGX250_82	Non-slip mat
83	SP_HGX100-HGX250_83	waist belt
84	SP_HGX100-HGX250_84	Single belt
85	SP_HGX100-HGX250_85	Safety pin

Number in explosion drawing	Item number	Description
86	SP_HGX100-HGX250_86	End cap
87	SP_HGX100-HGX250_87	Allen bolt M10x30
88	SP_HGX100-HGX250_88	Philips screw M6x16
89	SP_HGX100-HGX250_89	Screw M5x5/2,5
90	SP_HGX100-HGX250_90	Allen screw M8x23
91	SP_HGX100-HGX250_91	Carriage bolt M10x70
92	SP_HGX100-HGX250_92	Allen screw M10x20
93	SP_HGX100-HGX250_93	Allen screw M10x65
94	SP_HGX100-HGX250_94	Allen screw M10x45
95	SP_HGX100-HGX250_95	Allen screw M10x50
96	SP_HGX100-HGX250_96	Allen screw M10x25
97	SP_HGX100-HGX250_97	Allen screw M8x16
98	SP_HGX100-HGX250_98	Allen screw M10x80
99	SP_HGX100-HGX250_99	Allen screw M8x40
100	SP_HGX100-HGX250_100	Allen screw M10x160
101	SP_HGX100-HGX250_101	Allen screw M10x110
102	SP_HGX100-HGX250_102	Allen screw M10x60
103	SP_HGX100-HGX250_103	Nut M10
104	SP_HGX100-HGX250_104	Nut M6
105	SP_HGX100-HGX250_105	Washer D10
106	SP_HGX100-HGX250_106	Washer D8
107	SP_HGX100-HGX250_107	Big washer D25xD10,5xD1,5
108	SP_HGX100-HGX250_108	Washer
109	SP_HGX100-HGX250_109	Axis D16x188x162xM10x2
110	SP_HGX200-HGX250_110	T-shaped locking pin M8
111	SP_HGX200-HGX250_111	Power tower lower frame
112	SP_HGX200-HGX250_112	Power tower upper frame
113	SP_HGX200-HGX250_113	Lat bar
114	SP_HGX200-HGX250_114	Left arm
115	SP_HGX200-HGX250_115	Right arm
116	SP_HGX200-HGX250_116	Vertical handle
117	SP_HGX200-HGX250_117	Right pedal arm
118	SP_HGX200-HGX250_118	Left pedal arm
119	SP_HGX200-HGX250_119	Hydraulic cylinders
120	SP_HGX200-HGX250_120	Power tower back cushion
121	SP_HGX200-HGX250_121	Power tower arm curl pad
122	SP_HGX200-HGX250_122	Holder
123	SP_HGX200-HGX250_123	U-shaped bracket
124	SP_HGX250_124	Connecting frame
125	SP_HGX200-HGX250_125	U-shaped bracket
126	SP_HGX200-HGX250_126	L-shaped pin
127	SP_HGX200-HGX250_127	Pedal
128	SP_HGX200-HGX250_128	Rubber buffer
129	SP_HGX200-HGX250_129	Endkappe
130	SP_HGX200-HGX250_130	Shell 45x45/D25
131	SP_HGX200-HGX250_131	Handle D27,5xD31x550
132	SP_HGX200-HGX250_132	End cap 45x45x2
133	SP_HGX200-HGX250_133	Allen screw M8x10
134	SP_HGX200-HGX250_134	Allen screw M12x75
135	SP_HGX200-HGX250_135	Allen screw M12
136	SP_HGX200-HGX250_136	Allen screw M8x60
137	SP_HGX200-HGX250_137	Allen screw M8x70
138	SP_HGX200-HGX250_138	Philips screw M5x16
139	SP_HGX200-HGX250_139	Washer D12
140	SP_HGX200-HGX250_140	End cap D28
141	SP_HGX200-HGX250_141	Holder for weight stack
142	SP_HGX200-HGX250_142	Allen screw M6x33
143	SP_HGX200-HGX250_143	Philips screw D23xD8,3x1,5
144	SP_HGX200-HGX250_144	U-shaped bracket
145	SP_HGX200-HGX250_145	Washer D23xD8,3xD1,5
146	SP_HGX200-HGX250_146	L-shaped pin
147	SP_HGX200-HGX250_147	Holder
148	SP_HGX250_148	Weight stand
149	SP_HGX250_149	Punching bag frame bottom
150	SP_HGX250_150	Punching bag frame top
151	SP_HGX250_151	Punching holder
not in drawing	SP_HGX250_Carton_1/5_Top	Carton for A quality 1/5 top
not in drawing	SP_HGX250_Carton_1/5_Bottom	Carton for A quality 1/5 bottom
not in drawing	SP_HGX250_Carton_2/5_Top	Carton for A quality 2/5 top
not in drawing	SP_HGX250_Carton_2/5_Bottom	Carton for A quality 2/5 bottom
not in drawing	SP_HGX250_Carton_3/5_Top	Carton for A quality 3/5 top
not in drawing	SP_HGX250_Carton_3/5_Bottom	Carton for A quality 3/5 bottom
not in drawing	SP_HGX250_Carton_4/5_Top	Carton for A quality 4/5 top
not in drawing	SP_HGX250_Carton_4/5_Bottom	Carton for A quality 4/5 bottom
not in drawing	SP_HGX250_Carton_5/5_Top	Carton for A quality 5/5 top
not in drawing	SP_HGX250_Carton_5/5_Bottom	Carton for A quality 5/5 bottom
not in drawing	SP_HGX250_Manual	Manual
not in drawing	SP_HGX100-HGX250_Poster	Trainings poster HGX100-HGX250
not in drawing	SP_HGX250_Screw set 1/4	Screw and tool set HGX250 1/4
not in drawing	SP_HGX250_Screw set 2/4	Screw and tool set HGX250 2/4
not in drawing	SP_HGX250_Screw set 3/4	Screw and tool set HGX250 3/4
not in drawing	SP_HGX250_Screw set 4/4	Screw and tool set HGX250 4/4
not in drawing	SP_HGX250_Sticker_01	Sticker 1