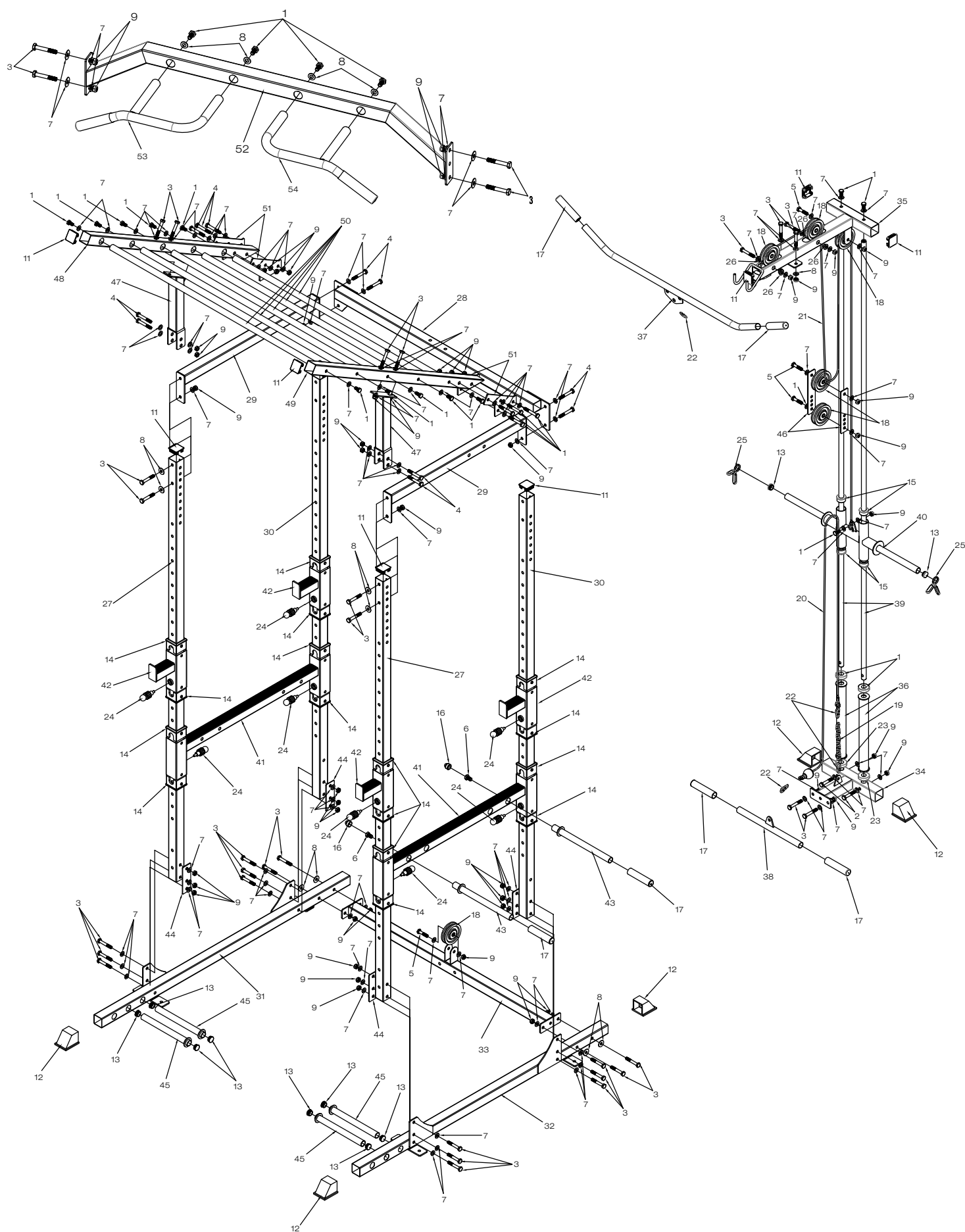


EXPLOSION-DRAWING / SPAREPARTS-OVERVIEW

EXPLOSIONSZEICHNUNG / ERSATZTEILLISTE



SPORTSTECH

POWERRACK FPR300/350

Number in explosion drawing	Item number	Description
1	SP_FPR300/350_01	Hex bolt M10x20
2	SP_FPR300/350_02	Hex bolt M10x60
3	SP_FPR300/350_03	Hex bolt M10x65
4	SP_FPR300/350_04	Hex bolt M10x70
5	SP_FPR300/350_05	Hex bolt M10x45
6	SP_FPR300/350_06	Hex bolt M12x20
7	SP_FPR300/350_07	Washer10x1.5t
8	SP_FPR300/350_08	Washer 30x10x2t
9	SP_FPR300/350_09	Black nut M10
10	SP_FPR300/350_10	Anchoring screw M10x80
11	SP_FPR300/350_11	Square end cap 45x45x1.5
12	SP_FPR300/350_12	Rubber foot 45x45
13	SP_FPR300/350_13	Round end cap 25D
14	SP_FPR300/350_14	Hollow sleeve 60x1.5x45
15	SP_FPR300/350_15	Round hollow sleeve 38x2tx19
16	SP_FPR300/350_16	Red plastic nut M12x19
17	SP_FPR300/350_17	Rubber hand grip 25x125
18	SP_FPR300/350_18	Pulley D90
19	SP_FPR300/350_19	Chain 8 rings
20	SP_FPR300/350_20	Cable L216
21	SP_FPR300/350_21	Cable L364.5
22	SP_FPR300/350_22	Buckle D7
23	SP_FPR300/350_23	Buffer ring 45.2x20x12t
24	SP_FPR300/350_24	Knob M20
25	SP_FPR300/350_25	spring collar
26	SP_FPR300/350_26	Pulley bearing
27	SP_FPR300/350_27	Front upright
28	SP_FPR300/350_28	Back cross bar
29	SP_FPR300/350_29	Top side frame bar
30	SP_FPR300/350_30	Back up right
31	SP_FPR300/350_31	Left base
32	SP_FPR300/350_32	Right base
33	SP_FPR300/350_33	Rearbase
34	SP_FPR300/350_34	back base tube

Number in explosion drawing	Item number	Description
35	SP_FPR300/350_35	Top part
36	SP_FPR300/350_36	guiding rail
37	SP_FPR300/350_37	Top handle
38	SP_FPR300/350_38	Base handle
39	SP_FPR300/350_39	Guide rod
40	SP_FPR300/350_40	Plate load part
41	SP_FPR300/350_41	J-Hook
42	SP_FPR300/350_42L	Safety left
42	SP_FPR300/350_42R	Safety right
43	SP_FPR300/350_43	Dip bar
44	SP_FPR300/350_44	Steel plate
45	SP_FPR300/350_45	Band peg
46	SP_FPR300/350_46	Steel Plate for pulley
47	SP_FPR300_52	Cross bar
48	SP_FPR300_53	Left handle
49	SP_FPR300_54	Right handle
50	SP_FPR350_47	Supporting tube
51	SP_FPR350_48	Left tube
52	SP_FPR350_49	Right tube
53	SP_FPR350_50	Climbing tube
54	SP_FPR350_51	Connection plate
Not in drawing	SP_FPR300/350_Screwset 1/4	Screw set
Not in drawing	SP_FPR300/350_Screwset 2/4	Screw Set
Not in drawing	SP_FPR300/350_Screwset 3/4	Screw Set
Not in drawing	SP_FPR300/350_Screwset 4/4	Screw Set
Not in drawing	SP_FPR300/350_Carton A	Carton A 219,5x20,5x21
Not in drawing	SP_FPR300/350_Carton B	Carton B 126x28x20
not in drawing	SP_FPR300/350_Carton C	Carton C 81x43x16
not in drawing	SP_FPR300_Carton D	Carton D 114,5x27,5x11,5
not in drawing	SP_FPR350_Carton D	Carton D 103,5.36.15
not in drawing	SP_FPR300/350_Manual	Manual
not in drawing	SP_FPR300/350_Label	Rating label