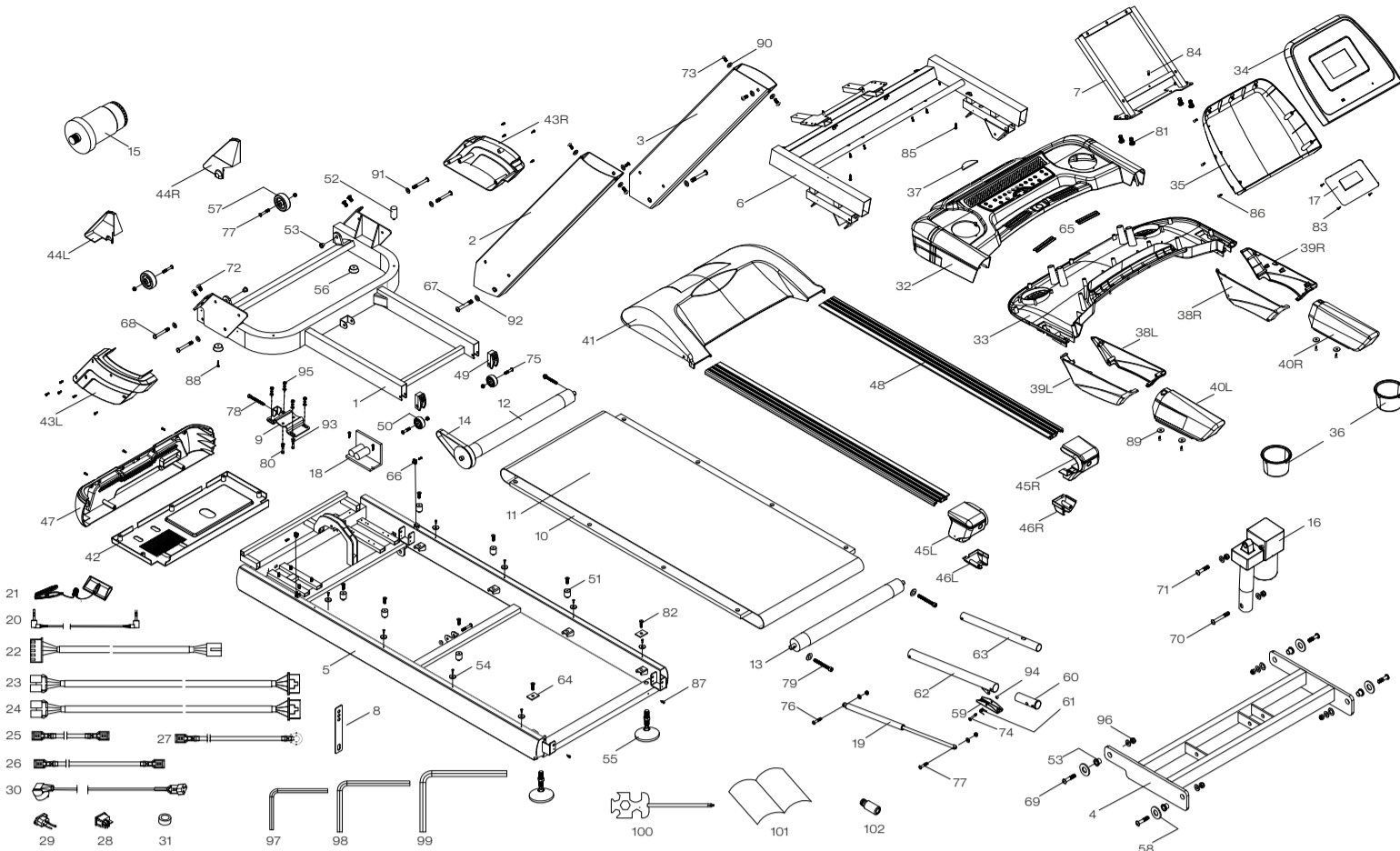


EXPLOSION-DRAWING / SPAREPARTS-OVERVIEW

EXPLOSIONSZEICHNUNG / ERSATZTEILLISTE



SPORTSTECH

Treadmill F75
Laufband F75

| Number in explosion drawing | Item number | Description |
|-----------------------------|-------------|----------------------------|
| 1 | SP_F75_01 | Base frame |
| 2 | SP_F75_02 | Left column |
| 3 | SP_F75_03 | Right column |
| 4 | SP_F75_04 | Incline frame |
| 5 | SP_F75_05 | Main frame |
| 6 | SP_F75_06 | Computer stand |
| 7 | SP_F75_07 | Panel frame |
| 8 | SP_F75_08 | Package stator |
| 9 | SP_F75_09 | Motor support |
| 10 | SP_F75_10 | Running board |
| 11 | SP_F75_11 | Running belt |
| 12 | SP_F75_12 | Front roller |
| 13 | SP_F75_13 | Rear roller |
| 14 | SP_F75_14 | Motor belt |
| 15 | SP_F75_15 | DC motor |
| 16 | SP_F75_16 | Incline motor |
| 17 | SP_F75_17 | Computer pcb |
| 18 | SP_F75_18 | Controller lower control |
| 19 | SP_F75_19 | Gas spring |
| 20 | SP_F75_20 | MP3 connecting line |
| 21 | SP_F75_21 | Safety lock |
| 22 | SP_F75_22 | Computer top line |
| 23 | SP_F75_23 | Computer middle line |
| 24 | SP_F75_24 | Computer bottom line |
| 25 | SP_F75_25 | Single line 150 |
| 26 | SP_F75_26 | Single line 300 |
| 27 | SP_F75_27 | Single ground line 150 |
| 28 | SP_F75_28 | Power switch |
| 29 | SP_F75_29 | T-shaped socket |
| 30 | SP_F75_30 | Power line with tail plug |
| 31 | SP_F75_31 | Magnet ring |
| 32 | SP_F75_32 | Computer top cover |
| 33 | SP_F75_33 | Computer bottom cover |
| 34 | SP_F75_34 | Computer panel |
| 35 | SP_F75_35 | Computer panel back cover |
| 36 | SP_F75_36 | Bottle box |
| 37 | SP_F75_37 | Computer semicircle keys |
| 38 | SP_F75_38L | Column top cover inner |
| 38 | SP_F75_38R | Column top cover inner |
| 39 | SP_F75_39L | Column top cover outer |
| 39 | SP_F75_39R | Column top cover outer |
| 40 | SP_F75_40L | Left foamed armrest |
| 40 | SP_F75_40R | Right foamed armrest |
| 41 | SP_F75_41 | Motor top cover |
| 42 | SP_F75_42 | Motor bottom cover |
| 43 | SP_F75_43L | Left side cover |
| 43 | SP_F75_43R | Right side cover |
| 44 | SP_F75_44L | Left inner-side cover |
| 44 | SP_F75_44R | Right inner-side cover |
| 45 | SP_F75_45L | Left end cap |
| 45 | SP_F75_45R | Right end cap |
| 46 | SP_F75_46L | Left end cap bottom cover |
| 46 | SP_F75_46R | Right end cap bottom cover |
| 47 | SP_F75_47 | Motor protecting cover |
| 48 | SP_F75_48 | Side rails |
| 49 | SP_F75_49 | Wheel cover |
| 50 | SP_F75_50 | Transport wheel |
| 51 | SP_F75_51 | Bumper post |
| 52 | SP_F75_52 | Rubber stopper |
| 53 | SP_F75_53 | Body twister |
| 54 | SP_F75_54 | Side rails buckle |
| 55 | SP_F75_55 | Stand |
| 56 | SP_F75_56 | PVC foot pad |
| 57 | SP_F75_57 | Rear wheel |

| Number in explosion drawing | Item number | Description |
|-----------------------------|-----------------------|---------------------------|
| 58 | SP_F75_58 | Powder sheath |
| 59 | SP_F75_59 | Gas spring clip |
| 60 | SP_F75_60 | Plastic sleeve |
| 61 | SP_F75_61 | Spring |
| 62 | SP_F75_62 | Gas spring cover bottom |
| 63 | SP_F75_63 | Gas spring cover top |
| 64 | SP_F75_64 | Eva tape |
| 65 | SP_F75_65 | Puls sensor |
| 66 | SP_F75_66 | PVC washer |
| 67 | SP_F75_67 | Bolt M12x80 |
| 68 | SP_F75_68 | Bolt M10x80 |
| 69 | SP_F75_69 | Bolt M10x25 |
| 70 | SP_F75_70 | Bolt M10x60 |
| 71 | SP_F75_71 | Bolt M10x45 |
| 72 | SP_F75_72 | Bolt M10x20 |
| 73 | SP_F75_73 | Bolt M10x20 |
| 74 | SP_F75_74 | Bolt M8x40 |
| 75 | SP_F75_75 | Bolt M8x45 |
| 76 | SP_F75_76 | Bolt M8x40 |
| 77 | SP_F75_77 | Bolt M8x45 |
| 78 | SP_F75_78 | Bolt M8x80 |
| 79 | SP_F75_79 | Bolt M8x60 |
| 80 | SP_F75_80 | Bolt M8x20 |
| 81 | SP_F75_81 | Bolt M8x15 |
| 82 | SP_F75_82 | Bolt ST4.2x25 |
| 83 | SP_F75_83 | Bolt ST4.2x10 |
| 84 | SP_F75_84 | Bolt ST4.0x30 |
| 85 | SP_F75_85 | Bolt ST4.0x16 |
| 86 | SP_F75_86 | Bolt ST4.2x16 |
| 87 | SP_F75_87 | Bolt ST4.2x25 |
| 88 | SP_F75_88 | Bolt M8x20 |
| 89 | SP_F75_89 | Bolt M4 Flatwasher |
| 90 | SP_F75_90 | M10 flat washer |
| 91 | SP_F75_91 | M10 flat washer |
| 92 | SP_F75_92 | M12 flat washer |
| 93 | SP_F75_93 | Bolt M8x12 |
| 94 | SP_F75_94 | M8 lock nut |
| 95 | SP_F75_95 | M10 lock nut |
| 96 | SP_F75_96 | M10 lock nut |
| 97 | SP_F75_97 | L-wrench 5mm |
| 98 | SP_F75_98 | L-wrench 6mm |
| 99 | SP_F75_99 | L-wrench 8mm |
| 100 | SP_F75_100 | Cross open wrench |
| 101 | SP_F75_101 | User's manual |
| 102 | SP_F75_102 | Silicone oil |
| not in drawing | SP_F75_103 | Display set |
| not in drawing | SP_F75_104 | Power line southafrika |
| not in drawing | SP_F75_105 | Convertor |
| not in drawing | SP_F75_106 | EMI filter |
| not in drawing | SP_F75_107 | Start/Stop button |
| not in drawing | SP_F75_108 | Electric coil |
| not in drawing | SP_F75_109 | Safety platin |
| not in drawing | SP_F75_110 | Platin |
| not in drawing | SP_F75_111 | Cable |
| not in drawing | SP_F75_112 | Speaker |
| not in drawing | SP_F75_113 | Main button |
| not in drawing | SP_F75_114 | Console set |
| not in drawing | SP_F75_115 | Console set + Display set |
| not in drawing | SP_F75_Screw set | Screw and tool set |
| not in drawing | SP_F75_Carton_Top | Carton |
| not in drawing | SP_F75_Carton_Bottom | Carton |
| not in drawing | SP_F75_Carton_Console | Carton for console |