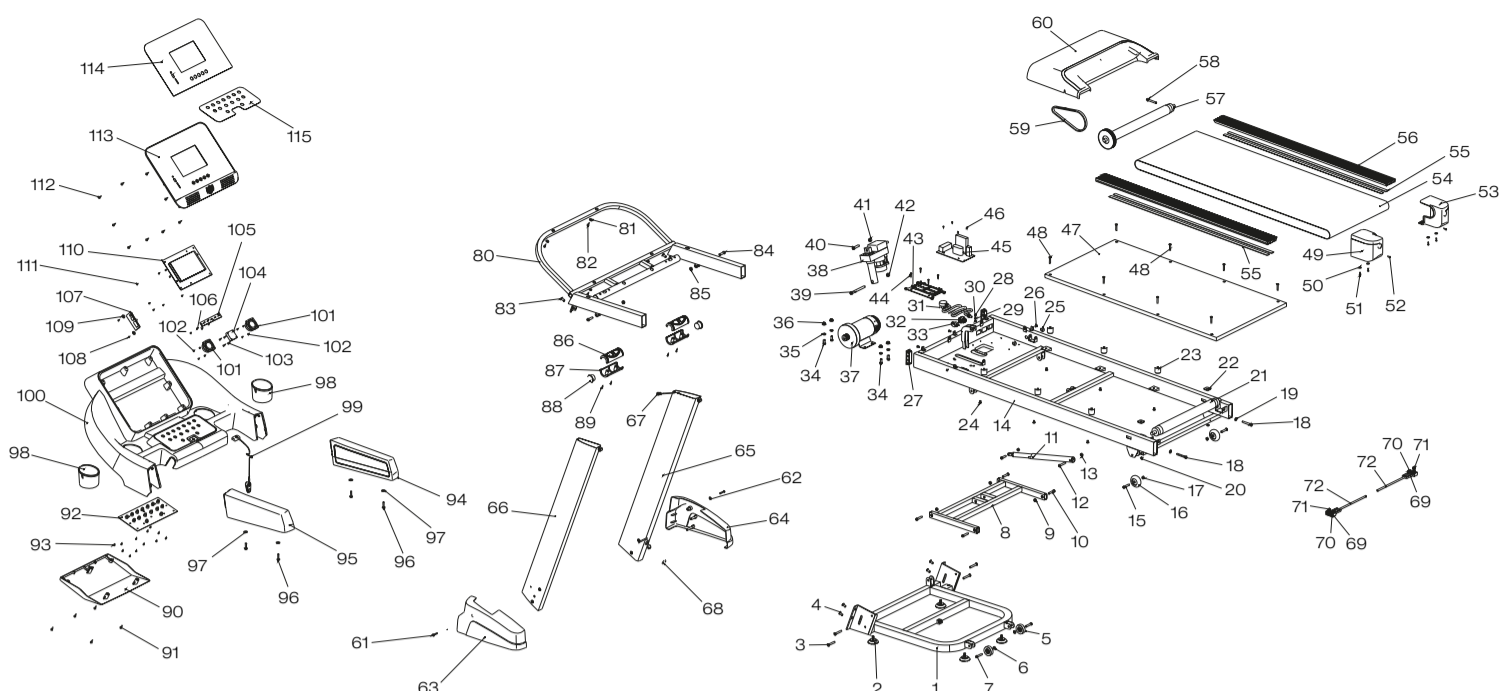


EXPLOSION-DRAWING / SPAREPARTS-OVERVIEW

EXPLOSIONSZEICHNUNG / ERSATZTEILLISTE



SPORTSTECH

TREADMILL F37
LAUFBAND F37

Number in explosion drawing	Item number	Description
1	SP_F37_01	Base frame
2	SP_F37_02	PVC foot pad
3	SP_F37_03	Hexagon socket cap screws
4	SP_F37_04	Hexagon socket cap screws
5	SP_F37_05	Base wheel
6	SP_F37_06	Locknut
7	SP_F37_07	Hexagon socket cap screws
8	SP_F37_08	Incline frame
9	SP_F37_09	Locknut
10	SP_F37_10	Hexagon socket cap screws
11	SP_F37_11	Gas spring
12	SP_F37_12	Hexagon socket cap screws
13	SP_F37_13	Hexagon socket cap screws
14	SP_F37_14	Main frame
15	SP_F37_15	Hexagon socket cap screws
16	SP_F37_16	Rear wheel
17	SP_F37_17	Hexagon socket cap screws
18	SP_F37_18	Hexagon socket cap screws
19	SP_F37_19	Washer
20	SP_F37_20	Hexagon nuts
21	SP_F37_21	Rear roller
22	SP_F37_22	EVA tape
23	SP_F37_23	Bumper post
24	SP_F37_24	Flat screw
25	SP_F37_25	Wire grommet
26	SP_F37_26	Flat screw
27	SP_F37_27	Tube cap
28	SP_F37_28	Flat screw
29	SP_F37_29	Washer
30	SP_F37_30	Flat washer
31	SP_F37_31	Power board
32	SP_F37_32	Switch
33	SP_F37_33	Overload button
34	SP_F37_34	Hex screw
35	SP_F37_35	Spring washer
36	SP_F37_36	Hexagon nut
37	SP_F37_37	Motor
38	SP_F37_38	Incline motor
39	SP_F37_39	Hexagon socket cap screws
40	SP_F37_40	Hexagon socket cap screws
41	SP_F37_41	Locknut
42	SP_F37_42	Locknut
43	SP_F37_43	Plastic board
44	SP_F37_44	Screw
45	SP_F37_45	Electric controller
46	SP_F37_46	Hexagon socket cap screws
47	SP_F37_47	Running board
48	SP_F37_48	Screw
49	SP_F37_49	Left rear end cover
50	SP_F37_50	Flat washer
51	SP_F37_51	Hexagon socket cap screws
52	SP_F37_52	Hexagon socket cap screws
53	SP_F37_53	Right rear end cover
54	SP_F37_54	Running belt
55	SP_F37_55	EVA tape
56	SP_F37_56	Side rail
57	SP_F37_57	Front roller
58	SP_F37_58	Hexagon socket cap screws
59	SP_F37_59	Motor belt
60	SP_F37_60	Motor cover
61	SP_F37_61	Head screw
62	SP_F37_62	Flat washer
63	SP_F37_63	Left tube cover
64	SP_F37_64	Right tube cover

Number in explosion drawing	Item number	Description
65	SP_F37_65	Right side tube
66	SP_F37_66	Left side tube
67	SP_F37_67	Connecting wire
68	SP_F37_68	Wire grommet
69	SP_F37_69	Oil cover down
70	SP_F37_70	Oil cover upper
71	SP_F37_71	Seal cap
72	SP_F37_72	Oil tube
73	SP_F37_73	Handrail frame
79	SP_F37_79	Pulse sensor cover down
80	SP_F37_80	Meter frame
81	SP_F37_81	Handrail cap
82	SP_F37_82	Head screw
83	SP_F37_83	Hexagon socket cap screws M8x20
84	SP_F37_84	Hexagon socket cap screws
85	SP_F37_85	Locknut
86	SP_F37_86	Pulse sensor cover upper
87	SP_F37_87	Pulse sensor cover down
88	SP_F37_88	Handrail cap
89	SP_F37_89	Head screw
90	SP_F37_90	Console cover down
91	SP_F37_91	Screw
92	SP_F37_92	Display board
93	SP_F37_93	Head screw
94	SP_F37_94	Right handlebar grip
95	SP_F37_95	Left handlebar grip
96	SP_F37_96	Screw
97	SP_F37_97	Flat washer
98	SP_F37_98	Cup holder
99	SP_F37_99	Safety key
100	SP_F37_100	Console middle
101	SP_F37_101	Speaker
102	SP_F37_102	Head screw
103	SP_F37_103	Head screw
104	SP_F37_104	Fan
105	SP_F37_105	Safety spring
106	SP_F37_106	Head screw
107	SP_F37_107	HIFI board
108	SP_F37_108	Head screw
109	SP_F37_109	Flat washer
110	SP_F37_110	Display screen
111	SP_F37_111	Head screw
112	SP_F37_112	Head screw
113	SP_F37_113	Console upper
114	SP_F37_114	Overlay screen
115	SP_F37_115	Overlay button
116	SP_F37_116	Power socket
not in drawing	SP_F37_117	EMI filter
not in drawing	SP_F37_118	Oil part set
not in drawing	SP_F37_119	Cable for console
not in drawing	SP_F37_120	Display set
not in drawing	SP_F37_121	Console set
not in drawing	SP_F37_122	Console set no handlebar
not in drawing	SP_F37_123	Electric coil
not in drawing	SP_F37_124	Sensor for motor
not in drawing	SP_F37_125	Wire fore electric coil
not in drawing	SP_F37_126	Motor fan
not in drawing	SP_F37_127	Screw M8x80
not in drawing	SP_F37_128	Gold bushing for 65 and 66
not in drawing	SP_F37_Carton_Bottom	Carton bottom
not in drawing	SP_F37_Carton_Top	Carton top
not in drawing	SP_F37_Manual	Manual
not in drawing	SP_F37_Screw set	Screw and tool set