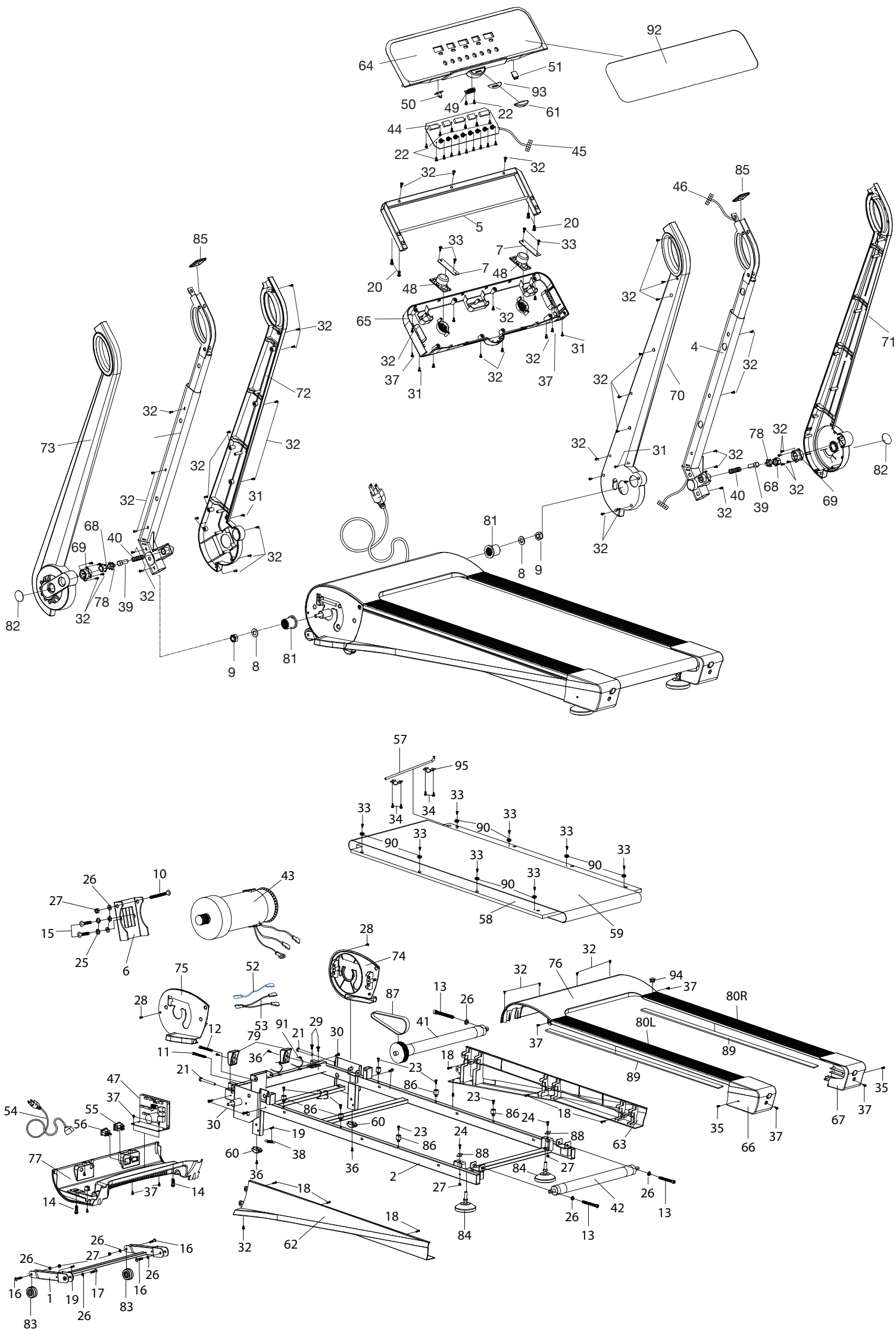


# EXPLOSION-DRAWING / SPAREPARTS-OVERVIEW

## EXPLOSIONSZEICHNUNG / ERSATZTEILLISTE



**SPORTSTECH**

**TREADMILL F17**  
**LAUFBAND F17**

| Number in explosion drawing | Item number | Description                          |
|-----------------------------|-------------|--------------------------------------|
| 1                           | SP_F17_01   | Alignment jig assembly               |
| 2                           | SP_F17_02   | Main frame assembly                  |
| 3                           | SP_F17_03   | Left upright frame assembly          |
| 4                           | SP_F17_04   | Right upright frame assembly         |
| 5                           | SP_F17_05   | Display frame assembly               |
| 6                           | SP_F17_06   | Motor holder                         |
| 7                           | SP_F17_07   | Speaker pressing plate               |
| 8                           | SP_F17_08   | Washer                               |
| 9                           | SP_F17_09   | Hexagon check nut                    |
| 10                          | SP_F17_10   | Socket cap screw                     |
| 11                          | SP_F17_11   | Socket cap screw                     |
| 12                          | SP_F17_12   | Socket cap screw                     |
| 13                          | SP_F17_13   | Socket cap screw                     |
| 14                          | SP_F17_14   | Socket cap screw                     |
| 15                          | SP_F17_15   | Half-round hexagon screw             |
| 16                          | SP_F17_16   | Half-round hexagon screw             |
| 17                          | SP_F17_17   | Half-round hexagon screw             |
| 18                          | SP_F17_18   | Half-round hexagon screw             |
| 19                          | SP_F17_19   | Half-round hexagon screw             |
| 20                          | SP_F17_20   | Half-round hexagon screw             |
| 21                          | SP_F17_21   | Outer hexagonal screw                |
| 22                          | SP_F17_22   | Cross head self-tapping screw        |
| 23                          | SP_F17_23   | Inner hexagon countersunk head screw |
| 24                          | SP_F17_24   | Inner hexagon countersunk head screw |
| 25                          | SP_F17_25   | Spring washer                        |
| 26                          | SP_F17_26   | Plate washer                         |
| 27                          | SP_F17_27   | Hexagon check nut                    |
| 28                          | SP_F17_28   | Cross countersunk head tapping screw |
| 29                          | SP_F17_29   | Cross round head screw with washer   |
| 30                          | SP_F17_30   | Cross round head screw               |
| 31                          | SP_F17_31   | Cross head self-tapping screw        |
| 32                          | SP_F17_32   | Cross head self-tapping screw        |
| 33                          | SP_F17_33   | Cross head self-tapping screw        |
| 34                          | SP_F17_34   | Cross head self-tapping screw        |
| 35                          | SP_F17_35   | Cross head self-tapping screw        |
| 36                          | SP_F17_36   | Cross head self-tapping screw        |
| 37                          | SP_F17_37   | Cross head self-tapping screw        |
| 38                          | SP_F17_38   | Tension spring                       |
| 39                          | SP_F17_39   | Fixed pin                            |
| 40                          | SP_F17_40   | Spring                               |
| 41                          | SP_F17_41   | Front roller                         |
| 42                          | SP_F17_42   | Back roller                          |
| 43                          | SP_F17_43   | DC motor                             |
| 44                          | SP_F17_44   | Display                              |
| 45                          | SP_F17_45   | Signal line upper                    |
| 46                          | SP_F17_46   | Signal line lower                    |
| 47                          | SP_F17_47   | Controller                           |
| 48                          | SP_F17_48   | Speaker                              |
| 49                          | SP_F17_49   | Sensor                               |
| 50                          | SP_F17_50   | MP3 input end                        |
| 51                          | SP_F17_51   | USB input end                        |
| 52                          | SP_F17_52   | AC connecting line                   |
| 53                          | SP_F17_53   | AC connecting line                   |

| Number in explosion drawing | Item number          | Description                       |
|-----------------------------|----------------------|-----------------------------------|
| 54                          | SP_F17_54            | Power cable                       |
| 55                          | SP_F17_55            | Switch                            |
| 56                          | SP_F17_56            | Power socket                      |
| 57                          | SP_F17_57            | Oil pipe                          |
| 58                          | SP_F17_58            | Running deck                      |
| 59                          | SP_F17_59            | Running belt                      |
| 60                          | SP_F17_60            | Frame foot pad                    |
| 61                          | SP_F17_61            | Safetylock                        |
| 62                          | SP_F17_62            | Right sidebar                     |
| 63                          | SP_F17_63            | Left sidebar                      |
| 64                          | SP_F17_64            | Display upper cover               |
| 65                          | SP_F17_65            | Display lower cover               |
| 66                          | SP_F17_66            | Right back angle bead             |
| 67                          | SP_F17_67            | Left back angle bead              |
| 68                          | SP_F17_68            | Unlock button                     |
| 69                          | SP_F17_69            | Unlock holder                     |
| 70                          | SP_F17_70            | Right upright frame cover-inside  |
| 71                          | SP_F17_71            | Right upright frame cover-outside |
| 72                          | SP_F17_72            | Left upright frame cover-inside   |
| 73                          | SP_F17_73            | Left upright frame cover-outside  |
| 74                          | SP_F17_74            | Right side cover                  |
| 75                          | SP_F17_75            | Left side cover                   |
| 76                          | SP_F17_76            | Motor upper cover                 |
| 77                          | SP_F17_77            | Motor lower cover                 |
| 78                          | SP_F17_78            | Adjusting spindle                 |
| 79                          | SP_F17_79            | Front foot pad                    |
| 80                          | SP_F17_80L           | Left upper sidebar no oil tube    |
| 80                          | SP_F17_80R           | Right upper sidebar with oil tube |
| 81                          | SP_F17_81            | Bushing                           |
| 82                          | SP_F17_82            | Screw cover                       |
| 83                          | SP_F17_83            | Transportation wheel              |
| 84                          | SP_F17_84            | Foot pad                          |
| 85                          | SP_F17_85            | Handle butt joint                 |
| 86                          | SP_F17_86            | Rubber buffer                     |
| 87                          | SP_F17_87            | Multiple-groove band              |
| 88                          | SP_F17_88            | Rubber blanket                    |
| 89                          | SP_F17_89            | Sponge glue                       |
| 90                          | SP_F17_90            | Sidebar detain                    |
| 91                          | SP_F17_91            | Safety lock                       |
| 92                          | SP_F17_92            | Display sticker                   |
| 93                          | SP_F17_93            | Metal plate                       |
| 94                          | SP_F17_94            | Tube plug                         |
| 95                          | SP_F17_95            | Cable clip                        |
| not in drawing              | SP_F17_96            | Displayset                        |
| not in drawing              | SP_F17_97            | Puls belt                         |
| not in drawing              | SP_F17_98            | EMI filter                        |
| not in drawing              | SP_F17_99            | Coil                              |
| not in drawing              | SP_F17_100           | USB port                          |
| not in drawing              | SP_F17_101           | Rubber spacer                     |
| not in drawing              | SP_F17_Accessory Kit | Accessoy kit                      |
| not in drawing              | SP_F17_Carton_Top    | Carton for A quality top          |
| not in drawing              | SP_F17_Carton_Bottom | Carton for A quality bottom       |
| not in drawing              | SP_F17_Manual        | Manual                            |