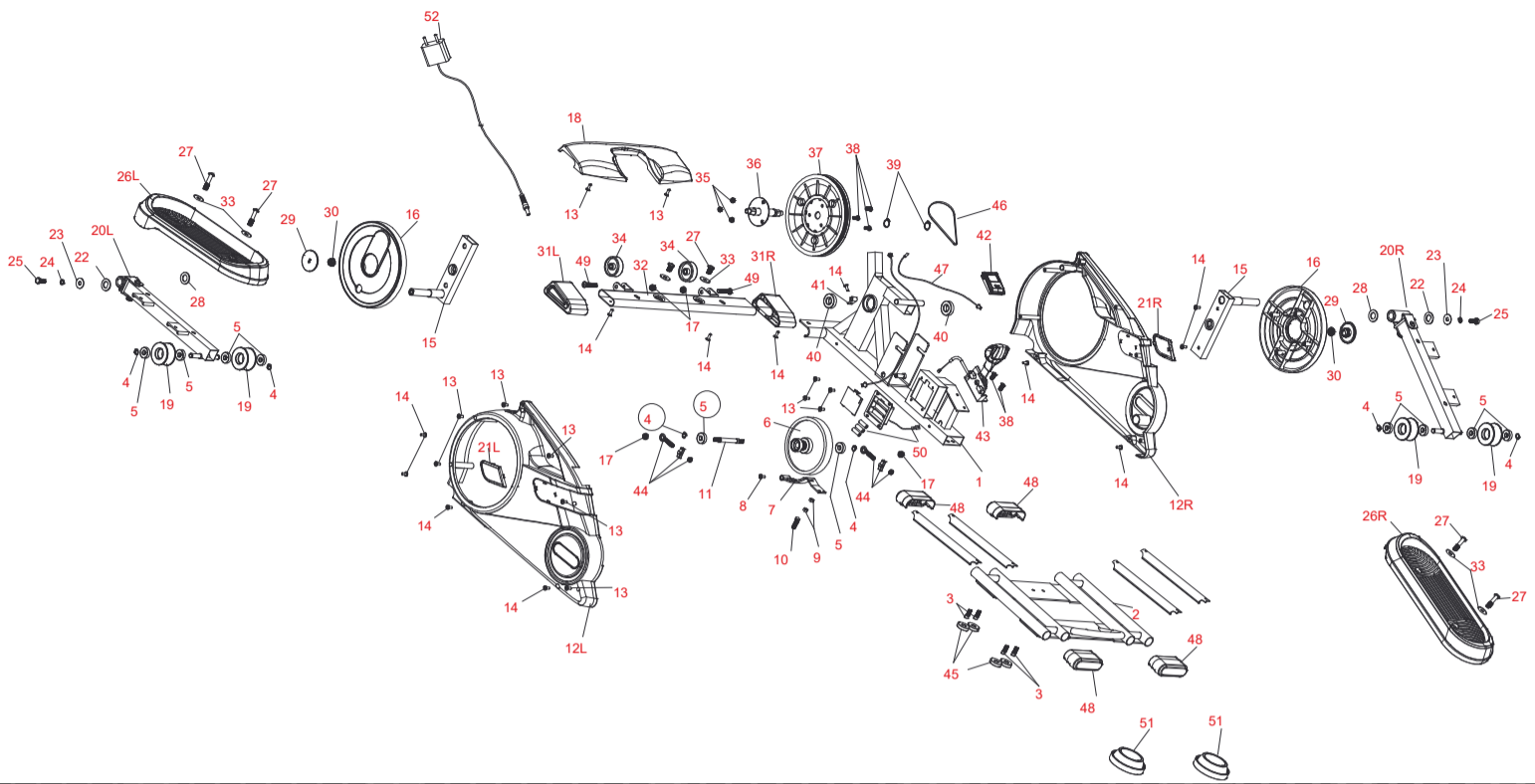


EXPLOSION-DRAWING / SPAREPARTS-OVERVIEW

EXPLOSIONSZEICHNUNG / ERSATZTEILLISTE



SPORTSTECH

STEPPER DFX100

Number in explosion drawing	Item number	Description
1	SP_DFX100_01	Main frame
2	SP_DFX100_02	Base board
3	SP_DFX100_03	Allen bolt M6x15
4	SP_DFX100_04	Clamp spring
5	SP_DFX100_05	Bearing 6000
6	SP_DFX100_06	Flywheel
7	SP_DFX100_07	Magnet assembly
8	SP_DFX100_08	Screw M5x15
9	SP_DFX100_09	Hex nut M6
10	SP_DFX100_10	Hex bolt M6
11	SP_DFX100_11	Axle for flywheel
12L	SP_DFX100_12L	Left chain cover
12R	SP_DFX100_12R	Right chain cover
13	SP_DFX100_13	Self tapping screw ST5x20
14	SP_DFX100_14	Self tapping screw ST5x15
15	SP_DFX100_15	Support holder
16	SP_DFX100_16	Main frame cover
17	SP_DFX100_17	Nylon nut M8
18	SP_DFX100_18	Rear stabilizer cover
19	SP_DFX100_19	Roller
20L	SP_DFX100_20L	Left pedal tube
20R	SP_DFX100_20R	Right pedal tube
21L	SP_DFX100_21L	Left decorative cover
21R	SP_DFX100_21R	Right decorative cover
22	SP_DFX100_22	D type washer
23	SP_DFX100_23	Washer D8xD25
24	SP_DFX100_24	Spring washer
25	SP_DFX100_25	Hex bolt M8x20
26L	SP_DFX100_26L	Left pedal
26R	SP_DFX100_26R	Right pedal
27	SP_DFX100_27	Allen bolt M8x20

Number in explosion drawing	Item number	Description
28	SP_DFX100_28	Washer
29	SP_DFX100_29	Decorative cover
30	SP_DFX100_30	Flange nut
31L	SP_DFX100_31L	Left end cap for rear stabilizer
31R	SP_DFX100_31R	Right end cap for rear stabilizer
32	SP_DFX100_32	Rear stabilizer
33	SP_DFX100_33	Flat washer D8xD17
34	SP_DFX100_34	Roller D50
35	SP_DFX100_35	Nylon nut M6
36	SP_DFX100_36	Axle for belt pulley
37	SP_DFX100_37	Belt pulley
38	SP_DFX100_38	Allen bolt M6x15
39	SP_DFX100_39	Clamp spring D17
40	SP_DFX100_40	Bearing
41	SP_DFX100_41	Sensor bracket
42	SP_DFX100_42	Console
43	SP_DFX100_43	Tension knob
44	SP_DFX100_44	Joint screw assembly
45	SP_DFX100_45	Rubber feet
46	SP_DFX100_46	Belt
47	SP_DFX100_47	Sensor wire
48	SP_DFX100_48	End cap
49	SP_DFX100_49	Allen bolt M8x40
50	SP_DFX100_50	Battery with holder
51	SP_DFX100_51	Chair stopper
52	SP_DFX100_52	Power adapter with connector
not in drawing	SP_DFX100_53	Washer between No.5 and No.20
not in drawing	SP_DFX100_54	Power wire
not in drawing	SP_DFX100_Carton	Carton for A quality
not in drawing	SP_DFX100_Manual	Manual
not in drawing	SP_DFX100_Screw set	Screw and tool set