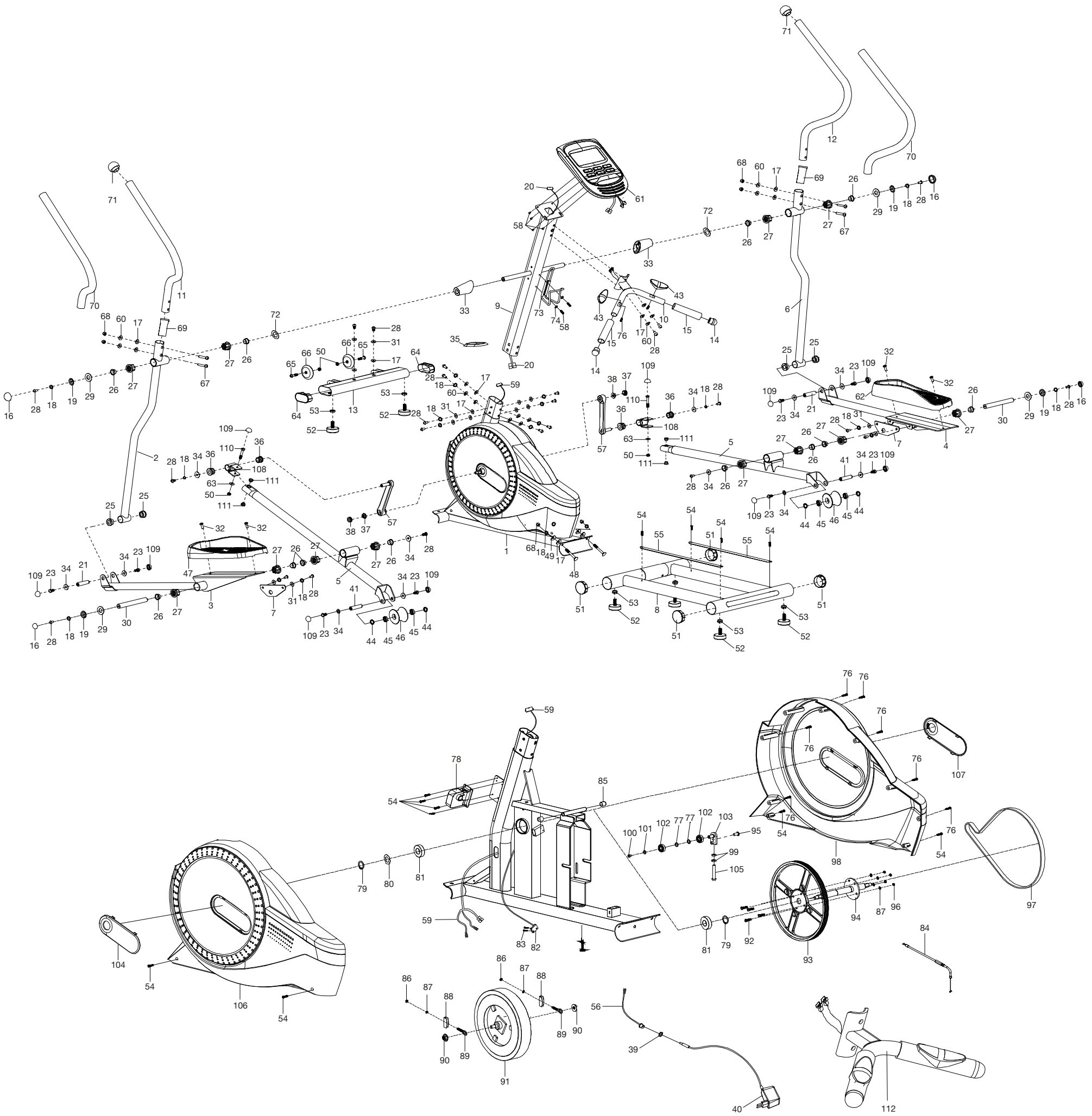


EXPLOSION-DRAWING / SPAREPARTS-OVERVIEW

EXPLOSIONSZEICHNUNG / ERSATZTEILLISTE



SPORTSTECH

CROSSTRAINER CX640

| Number in explosion drawing | Item number | Description |
|-----------------------------|-------------|--------------------------------|
| 1 | SP_CX640_01 | Main frame |
| 2 | SP_CX640_02 | Left handrail arm |
| 3 | SP_CX640_03 | Left foot tube |
| 4 | SP_CX640_04 | Right foot tube |
| 5 | SP_CX640_05 | Drive tube |
| 6 | SP_CX640_06 | Right handrail arm |
| 7 | SP_CX640_07 | Connection piece |
| 8 | SP_CX640_08 | Rear main frame |
| 9 | SP_CX640_09 | Front post |
| 10 | SP_CX640_10 | Handlebar |
| 11 | SP_CX640_11 | Left handrail |
| 12 | SP_CX640_12 | Right handrail |
| 13 | SP_CX640_13 | Front stabilizer |
| 14 | SP_CX640_14 | Handlebar end cap |
| 15 | SP_CX640_15 | Handlebar foam grip |
| 16 | SP_CX640_16 | Cap D38 |
| 17 | SP_CX640_17 | Pvc washer D10xD20x1.5 |
| 18 | SP_CX640_18 | Spring washer D8 |
| 19 | SP_CX640_19 | Curve Washer D8xD33x2.0 |
| 20 | SP_CX640_20 | Middle wire L=1000mm |
| 21 | SP_CX640_21 | Connect shaft D16x65.5 |
| 23 | SP_CX640_23 | Bolt M8x16 |
| 24 | SP_CX640_24 | Transport wheel bushing D20x30 |
| 25 | SP_CX640_25 | Bushing D32xD16x20 |
| 26 | SP_CX640_26 | Bushing pom/D27x11 |
| 27 | SP_CX640_27 | Bushing D38D24 |
| 28 | SP_CX640_28 | Bolt M8x20 |
| 29 | SP_CX640_29 | Big washer D19xD25x2.0 |
| 30 | SP_CX640_30 | Tube Q235 |
| 31 | SP_CX640_31 | Washer D8x D20x2.0 |
| 32 | SP_CX640_32 | Bolt M8x20 |
| 33 | SP_CX640_33 | Plastic bushing |
| 34 | SP_CX640_34 | Big washer D8x D25x2.0 |
| 35 | SP_CX640_35 | Cover |
| 36 | SP_CX640_36 | Metal bushing D24.5x D16x14 |
| 37 | SP_CX640_37 | Nut M10x1.25x6 |
| 38 | SP_CX640_38 | Crank cover |
| 39 | SP_CX640_39 | Nut S15 |
| 40 | SP_CX640_40 | Ac adapter L=2000mm |
| 41 | SP_CX640_41 | Connect shaft D15x63.8 |
| 43 | SP_CX640_43 | Hand pulse wire L=550mm |
| 44 | SP_CX640_44 | Spacer D22x3 |
| 45 | SP_CX640_45 | Bearing 6202 ZZ |
| 46 | SP_CX640_46 | Wheel |
| 47 | SP_CX640_47 | Left pedal |
| 48 | SP_CX640_48 | Bolt M8x80 |
| 49 | SP_CX640_49 | Curve washer D8xD20x2.0 |
| 50 | SP_CX640_50 | Nut M8 |
| 51 | SP_CX640_51 | End cap for stabilizer |
| 52 | SP_CX640_52 | Foot pad |
| 53 | SP_CX640_53 | Nut M10 |
| 54 | SP_CX640_54 | Screw ST4.2x20 |
| 55 | SP_CX640_55 | Aluminum sheet |
| 56 | SP_CX640_56 | Power supply wire L=550mm |
| 57 | SP_CX640_57 | Crank |
| 58 | SP_CX640_58 | Bolt M5x15 |
| 59 | SP_CX640_59 | Console wire lL=600mm |

| Number in explosion drawing | Item number | Description |
|-----------------------------|--------------------|---------------------------------|
| 60 | SP_CX640_60 | Curve washer D8xD16x1.5 |
| 61 | SP_CX640_61 | Console |
| 62 | SP_CX640_62 | Right pedal |
| 63 | SP_CX640_63 | Washer D8xD16x2 |
| 64 | SP_CX640_64 | End cap 80x40x1.5 |
| 65 | SP_CX640_65 | Bolt M8x35 |
| 66 | SP_CX640_66 | Transport wheel |
| 67 | SP_CX640_67 | Bolt M8x49 |
| 68 | SP_CX640_68 | Nut M8 |
| 69 | SP_CX640_69 | Bushing D14x10.5x8 |
| 70 | SP_CX640_70 | Handlebar foam grip D31x37x860 |
| 71 | SP_CX640_71 | End cap for handrail |
| 72 | SP_CX640_72 | Washer D19 |
| 73 | SP_CX640_73 | Bottle holder |
| 74 | SP_CX640_74 | Washer D10 |
| 76 | SP_CX640_76 | Screw ST4.2x20 |
| 77 | SP_CX640_77 | Washer D10 |
| 78 | SP_CX640_78 | Motor |
| 79 | SP_CX640_79 | Circclip D20 |
| 80 | SP_CX640_80 | Curve Washer D20 |
| 81 | SP_CX640_81 | C&U cylindrical bearings NU204 |
| 82 | SP_CX640_82 | Sensor wire L=1700 |
| 83 | SP_CX640_83 | Screw ST2.9x12 |
| 84 | SP_CX640_84 | Motor tension cable L=500mm |
| 85 | SP_CX640_85 | Flubber cap |
| 86 | SP_CX640_86 | Nut M6 S10 |
| 87 | SP_CX640_87 | Spring washer D6 |
| 88 | SP_CX640_88 | U bracket |
| 89 | SP_CX640_89 | Eyebolt M6x36 |
| 90 | SP_CX640_90 | Nut M10x1.0x6 |
| 91 | SP_CX640_91 | Flywheel |
| 92 | SP_CX640_92 | Bolt M6x15 |
| 93 | SP_CX640_93 | Belt pulley |
| 94 | SP_CX640_94 | Shaft |
| 95 | SP_CX640_95 | Spring washer D6 |
| 96 | SP_CX640_96 | Nut M6 S10 |
| 97 | SP_CX640_97 | Belt |
| 98 | SP_CX640_98 | Right chain cover |
| 99 | SP_CX640_99 | Nut M8 |
| 100 | SP_CX640_100 | Bolt M6x10 |
| 101 | SP_CX640_101 | Washer D12x6x1.0 |
| 102 | SP_CX640_102 | Bearing 6000ZZ |
| 103 | SP_CX640_103 | Idle wheel bracket |
| 104 | SP_CX640_104 | Left crank cover |
| 105 | SP_CX640_105 | Bolt M8x50 |
| 106 | SP_CX640_106 | Left chain cover |
| 107 | SP_CX640_107 | Right crank cover |
| 108 | SP_CX640_108 | U-bracket |
| 109 | SP_CX640_109 | Cap nut S13 |
| 110 | SP_CX640_110 | Bolt M8x50 |
| 111 | SP_CX640_111 | Powder metal bushing D18xD8xD10 |
| 112 | SP_CX640_112 | Handlebar set |
| not in drawing | SP_CX640_113 | General white grease |
| not in drawing | SP_CX640_114 | PTFE lubricant |
| not in drawing | SP_CX640_Carton | Carton |
| not in drawing | SP_CX640_Manual | Manual |
| not in drawing | SP_CX640_Screw set | Screw and tool set |