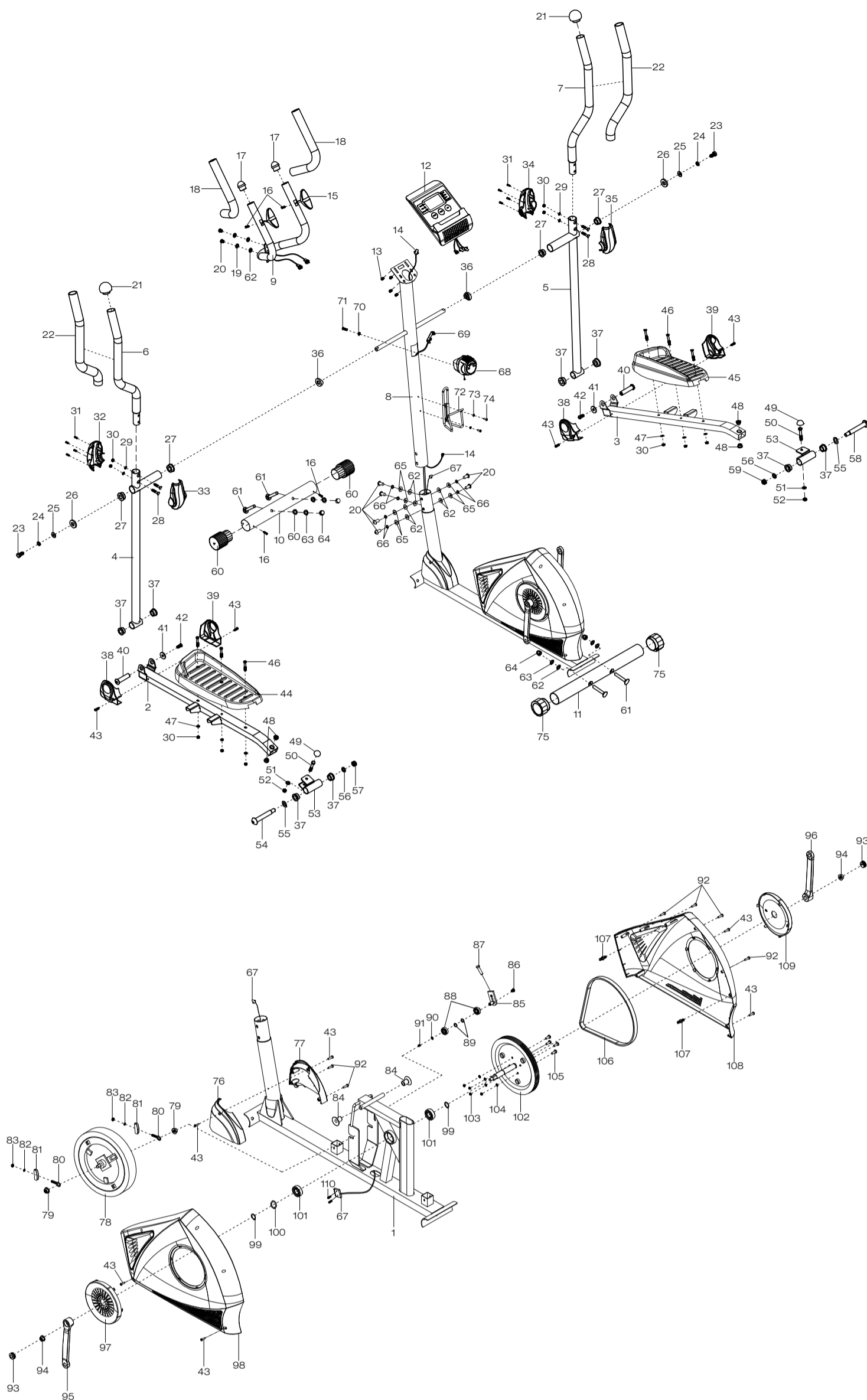


EXPLOSION-DRAWING / SPAREPARTS-OVERVIEW

EXPLOSIONSZEICHNUNG / ERSATZTEILLISTE



SPORTSTECH

CROSSTRAINER CX608

Number in explosion drawing	Item number	Description
1	SP_CX608_01	Main frame
2	SP_CX608_02	Left foot bar
3	SP_CX608_03	Right foot bar
4	SP_CX608_04	Left handrail arm lower
5	SP_CX608_05	Right handrail arm lower
6	SP_CX608_06	Left handrail arm upper
7	SP_CX608_07	Right handrail arm upper
8	SP_CX608_08	Front post
9	SP_CX608_09	Handlebar
10	SP_CX608_10	Front stabilizer
11	SP_CX608_11	Rear stabilizer
12	SP_CX608_12	Console
13	SP_CX608_13	Screw ST2.9x12
14	SP_CX608_14	Sensor wire L=1100
15	SP_CX608_15	Hand pulse sensor
16	SP_CX608_16	Screw ST4.2x20
17	SP_CX608_17	Handlebar end cap D28.6x1.5
18	SP_CX608_18	Handrail foam grip D33x27x360
19	SP_CX608_19	Curve washer D8xD16x1.5
20	SP_CX608_20	Bolt M8x15
21	SP_CX608_21	Handrail end cap D32x1.5
22	SP_CX608_22	Handrail foam grip D31x D37x480
23	SP_CX608_23	Bolt M10x18
24	SP_CX608_24	Spring washer D18x10x2
25	SP_CX608_25	Big washer D10xD20x2.0
26	SP_CX608_26	D washer D28x5.0
27	SP_CX608_27	Power bushing D33x D29.5xD16x3
28	SP_CX608_28	Bolt M6x35
29	SP_CX608_29	Curved washer D6
30	SP_CX608_30	Nut M6
31	SP_CX608_31	Screw ST2.9x12
32	SP_CX608_32	Left handrail arm cover A
33	SP_CX608_33	Left handrail arm cover B
34	SP_CX608_34	Right handrail arm cover A
35	SP_CX608_35	Right handrail arm cover B
36	SP_CX608_36	Plastic bushing D32xD16x5
37	SP_CX608_37	Power bushing D29xD16x14
38	SP_CX608_38	Foot bar cover-B
39	SP_CX608_39	Foot bar cover-A
40	SP_CX608_40	Bolt D15.8x62.5xM8
41	SP_CX608_41	Big washer D8x D20x2.0
42	SP_CX608_42	Bolt M8x20
43	SP_CX608_43	Screw ST4.2x25
44	SP_CX608_44	Left foot pedal
45	SP_CX608_45	Right foot pedal
46	SP_CX608_46	Bolt M6x40
47	SP_CX608_47	Washer D6x12x1.0
48	SP_CX608_48	Power bushing D18xD8x5
49	SP_CX608_49	Nut cap D13
50	SP_CX608_50	Bolt M8x50
51	SP_CX608_51	Washer D16x8x1.5
52	SP_CX608_52	Nut M8
53	SP_CX608_53	U shape bracket
54	SP_CX608_54	Bolt for left foot bar
55	SP_CX608_55	Curved washer D28x D17x0.3
56	SP_CX608_56	Spring washer D20
57	SP_CX608_57	Left nylon nut 1/2
58	SP_CX608_58	Bolt for right foot bar

Number in explosion drawing	Item number	Description
59	SP_CX608_59	Right nylon nut 1/2
60	SP_CX608_60	Front stabilizer end cap
61	SP_CX608_61	Bolt M10x57
62	SP_CX608_62	Pvc washer D10xD20x2
63	SP_CX608_63	Nut M10
64	SP_CX608_64	Cap nut M10
65	SP_CX608_65	Curved washer D8xD20x2
66	SP_CX608_66	Spring washer D8
67	SP_CX608_67	Extension sensor wire L=1800mm
68	SP_CX608_68	Tension control knob
69	SP_CX608_69	Tension cable L=1600mm
70	SP_CX608_70	Big washer D20x5.2
71	SP_CX608_71	Bolt M5x45
72	SP_CX608_72	Bottle holder
73	SP_CX608_73	Washer D5xD9x1.0
74	SP_CX608_74	Screw M5x15
75	SP_CX608_75	End cap for rear stabilizer
76	SP_CX608_76	Left decorative cover
77	SP_CX608_77	Right decorative cover
78	SP_CX608_78	Flywheel
79	SP_CX608_79	Nut M10x1.0x6
80	SP_CX608_80	Adjust bolt M6x36
81	SP_CX608_81	U bracket 31x30x1.0
82	SP_CX608_82	Spring washer D6
83	SP_CX608_83	Nut M6
84	SP_CX608_84	Bracket
85	SP_CX608_85	Idle wheel bracket
86	SP_CX608_86	Bolt M8x10
87	SP_CX608_87	Bolt M8x30
88	SP_CX608_88	Bearing 6000ZZ
89	SP_CX608_89	Washer D10.2xD14x1
90	SP_CX608_90	Washer D6xD12x1
91	SP_CX608_91	Bolt M6x10
92	SP_CX608_92	Screw ST4.2x25
93	SP_CX608_93	Cover cap
94	SP_CX608_94	Nut M10x1.25
95	SP_CX608_95	Left crank
96	SP_CX608_96	Right crank
97	SP_CX608_97	Left chain cover cap
98	SP_CX608_98	Left chain cover
99	SP_CX608_99	Cclip D17x1
100	SP_CX608_100	Wave washer D17xD21x0.3
101	SP_CX608_101	C&U cylindrical bearings D40x D17x12
102	SP_CX608_102	Pulley with crank
103	SP_CX608_103	Nut M6
104	SP_CX608_104	Spring washer D6
105	SP_CX608_105	Screw M6x15
106	SP_CX608_106	Belt
107	SP_CX608_107	Plastic knob D8x32
108	SP_CX608_108	Right chain cover
109	SP_CX608_109	Right chain cover cap
110	SP_CX608_110	Screw ST2.9x16
not in drawing	SP_CX608_111	Handlebar set
not in drawing	SP_CX608_112	Magnet
not in drawing	SP_CX608_113	Pulse wire
not in drawing	SP_CX608_Carton	Carton for A quality
not in drawing	SP_CX608_Manual	Manual
not in drawing	SP_CX608_Screw set	Screw and tool set