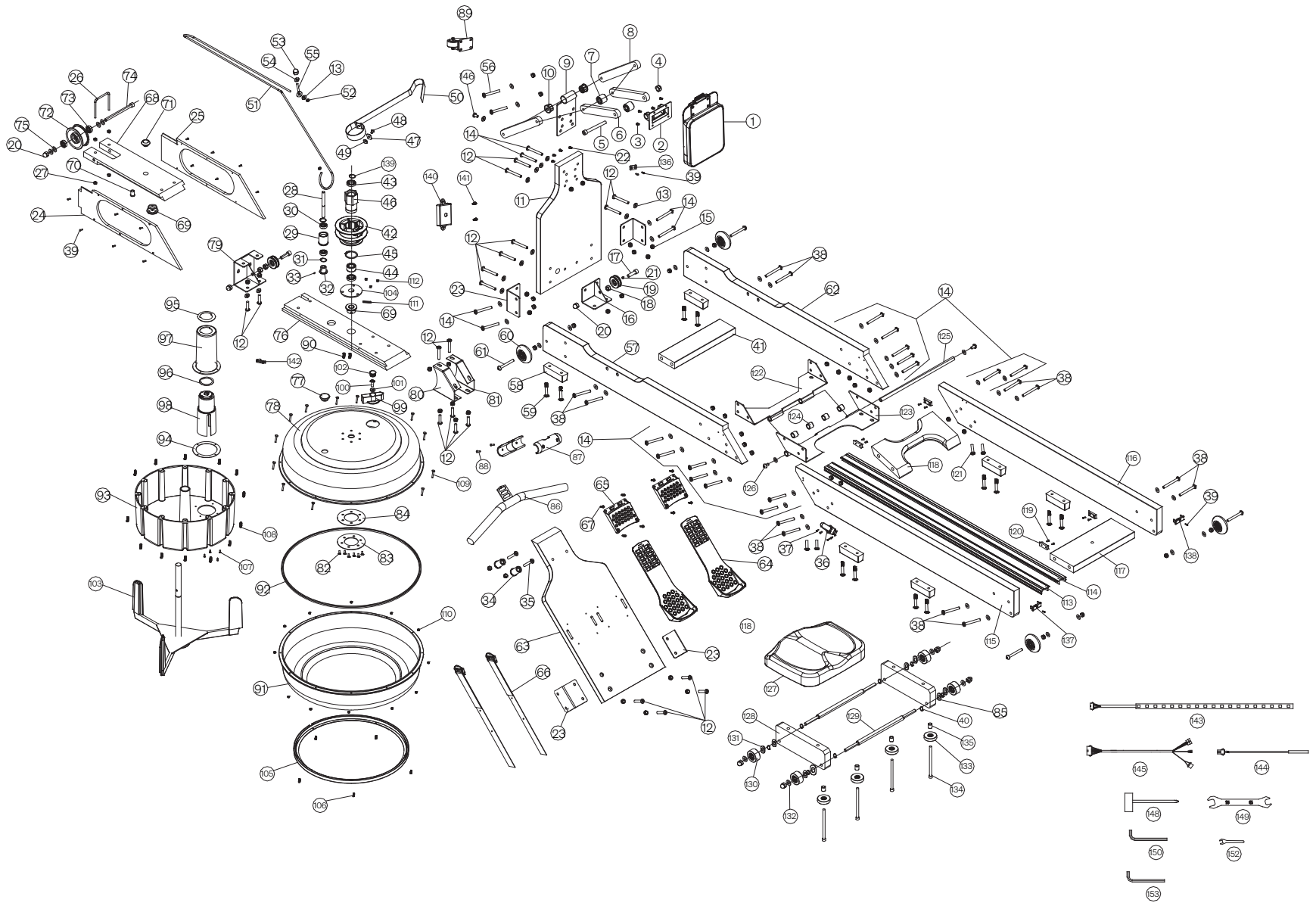


EXPLOSION-DRAWING / SPAREPARTS-OVERVIEW

EXPLOSIONSZEICHNUNG / ERSATZTEILLISTE



SPORTSTECH Rowing Machine WRX1000

NO	Description	Specification	Qty
1	Console		1
2	Console holder	ABS	1
3	Umbrella head cross screw	M5*12L	4
4	Nylon nuts	M10*P1.5*10T	1
5	Socket cap screw	M10*1.5*75L*S30L	1
6	Console adjust board short	30*200*15	2
7	Console connect sleeve	PA6,black	2
8	Console adjust board long	30*250*15	2
9	Console connect holder		1
10	P107 axle sleeve	PP	2
11	Frame front support plate	310*520*22	1
12	Countersunk hexagon socket screws with flat head	M8*P1.25*35L(full teeth)	1
13	Flat washer	Φ8*Φ14*1T	1
14	Countersunk hexagon socket screws with flat head	M8*P1.25*45L(full teeth)	1
15	Nylon nut	M8*P1.25*7T	1
16	Roller frame		1
17	Socket cap screw	M10*35L	1
18	Hexagon socket nuts with internal and external teeth without intermediate trapezoid	M8*P1.25*15L	1
19	C2 Elastic rope roller	PA6(B4L3BK)	1
20	Nylon nut	M10*P1.5*9T	1
21	Elastic rope roller sleeve	φ10.5*φ15*8L	1
22	Umbrella head hexagon socket screw	M6*P1.0*20L	4
23	L shape sheet	65*65*90L*3T	2
24	Frame spring box support plate left	130*522*9	1
25	Frame spring box support plate right	130*522*9	1
26	Steel bars on support plates	φ6*220L	1
27	Hex nut	M6*P1.0*5T	4
28	Pull rope roller fixed shaft	φ10*112L	1
29	Pull rope roller	PA6	1
30	Bearing	6000	2
31	Circlip for shaftΦ10	Φ9.3*Φ11.5*1T	2
32	Roller shaft sleeve φ10*φ29*23L1	φ10*φ29*23L	1
33	Hexagon socket set screws, flat end, headless	M5*5L	1
34	Pull rod fixed sleeve	PA6,black	2
35	Countersunk hexagon socket screws with flat head	M8*P1.25*70L	2
36	Quick adjustable tower buckle	4001	2
37	Countersunk head cross tapping screw)	ST3.9*15L	8
38	Countersunk hexagon socket screws with flat head	M8*P1.25*35(full teeth),6 opposite side	4
39	Cross recessed countersunk head tapping screws	ST3.9*15L	20
40	Circlip for shaft Φ14	Φ12.9*Φ15.6*1T	8
41	Tank support plate	80*310*28	1
42	C2 puller	PA66+30%GF	1
43	Bearing	6804	2
44	Punching outer ring needle roller clutch	HF2016(Outer rivet pressing iron bushing)	1
45	Circlip for shaftΦ40	outside callipers	1
46	C2 Elastic rope iron cover	No 45 steel,opposite side 41*76.6	1
47	C2 Tablet pressing	24*16*1.5T	1
48	Cross recessed countersunk head screw	M5*P0.8*16L	1
49	C2 locking block	12*15*4 (M5)	1
50	Drawstring	25*1T*2700L	1
51	Elastic string	φ7*2300L	1
52	Elastic string fixing sleeve	Φ7.6*Φ13*10L	2
53	Hexagon nuts with cover	M6*P1.0*11T	1
54	Flat washer	Φ6.5*Φ16*2T	1
55	C2 guide ring	M6*52*S38	1
56	Umbrella head hexagon socket screw	M8*P1.25*100L*S20	2
57	Frame support plate left	120*1015*28	1
58	Pad	Rubber 90°	1
59	Countersunk hexagon socket screws with flat head	M8*P1.25*35L(Full teeth)	2
60	idler wheel		4
61	Countersunk hexagon socket screws with flat head	M8*P1.25*75L	1
62	Frame support plate right	120*1015*28	1
63	Pedal support plate	310*640*22	1
64	Pedal adjusting pad	PP+28%TPE70 degree	2
65	Pedal fixed holder	PP	2
66	Pedal strap	Strap 25*570*1.5T, hook and loop fasteners	2
67	Shot head cross tapping screw	ST4.8*14L	8
68	Upper frame spring box support plate	122*404*22	1
69	Graphite copper sleeve	φ20*φ40*20L	1
70	Upper support plate sleeve	φ10*φ16*18L	1
71	Upper support plate stopper	Rubber 50°-55°	1
72	Stay cord upper roller	φ73.5*33L	1
73	Bearing		2
74	Socket cap screw	M10*135L*S20	1
75	Flat washer	Φ10.5*Φ16*2T	4
76	Water tank connecting plate	122*532*22	1

NO	Description	Specification	Qty
77	Tank top cover hole plug	Rubber 50°-55°	1
78	Tank top cover	PC	1
79	Wheel shelf		1
80	Console holder left	106*34*108L*2T	1
81	Console holder right	106*34*108L*2T	1
82	Umbrella head hexagon socket screw	M6*P1.0*20L	6
83	CH2O turning gear sheet	Φ100*2T	1
84	Rubber ring for tank top cover	Rubber 70°	1
85	Wave washer	Φ14*Φ21*0.3T	4
86	Pull rod		1
87	Pull rod wood	19*38*180,	2
88	Cross recessed countersunk head tapping screws	ST3.9*15L	2
89	Fore support plate universal wheel	1.5 "flat plate universal	1
90	Umbrella head cross tapping screw	ST3.9*16L	2
91	Water tank lower cover	PC	1
92	Silicone loop	Silicone,50°-60°	1
93	Resistance regulating box	PC	1
94	Resistance adjustment rubber ring	Rubber 70°	1
95	Resistance adjustment rubber ring	Rubber 70°	1
96	Resistance adjustment rubber ring	Rubber 70°	1
97	Resistance regulator top cover	ABS	1
98	Resistance regulator lower cover	ABS	1
99	Knob	ABS	1
100	Umbrella head hexagon socket screw	M8*P1.25*16L	1
101	Flat washer	Φ8*Φ16*1T	1
102	Screw cap	PP	1
103	Paddle	PA6+30%Gf	1
104	Blade holder	PA6	1
105	Light strip cover	PC	1
106	Cross recessed countersunk head tapping screws	ST2.9*8L	5
107	Cross recessed countersunk head tapping screws	ST2.9*12L	4
108	Shot head cross tapping screw	ST3.9*18L	12
109	Hexagon bolt	M4*P0.7*25L	12
110	Nylon nut	M4*P0.7	12
111	Elastic cylindrical pin	φ6*30L	1
112	M6 Books and newspapers stand strong magnet	Strong magnet,Φ7*4L	3
113	Aluminum track left	42*16*1105L*2T	1
114	Aluminum track right	42*16*1105L*2T	1
115	Slide rail support plate left	28*120*1112	1
116	Slide rail support plate left	28*120*1112	1
117	Sliding seat rear support plate	310*120*28	1
118	Sliding seat front support plate	157*310*28	1
119	Countersunk hexagon socket screws with flat head	M8*P1.25*40L	4
120	Crash pad	Rubber 50°~55°	2
121	Countersunk hexagon socket screws with flat head	M8*P1.25*40L	4
122	Hinge connecting sheet up	95*374*60*3T	1
123	Hinge connecting piece down	151*374*60*3T	1
124	Hinge connection sleeve	φ13.5*φ20*13L	4
125	Hinge center axis	φ13.5*372L	1
126	Umbrella head hexagon socket screw	M8*P1.25*16L	2
127	Saddle		1
128	Saddle holder	80*250*28	2
129	Fixed axle with left and right rollers	φ16*356.5	2
130	Seat pad left and right roller	PA6+PU,Black	4
131	Wave washer	Φ10*Φ15*0.3T	4
132	Flat washer	Φ8*Φ14*2T	4
133	Roller under seat		4
134	socket cap screw	M8*115*S25L,6 opposite side,black coating,8.8 class	4
135	Roller sleeve under seat	φ9*φ14*16L, galvanize surface	4
136	Wire fixing plate	15*30*2T	1
137	Aluminum rail rear cover left	PP	1
138	Aluminum rail rear cover right	PP	1
139	C shape buckle		4
140	Cell box	ABS	1
141	Umbrella head cross tapping screw	ST3.9*12L	2
142	33832 Sensor bar fixing seat	PP	1
143	Light strap		1
144	Sensor wire		1
145	CABLE wire	800L	1
146	Countersunk hexagon socket screws with flat head	M8*16	1
147	Flat washer	Φ6*Φ12*1T	4
148	Socket spanner	13, 15, cross	1
149	Open spanner	13, 15	1
150	hexagon wrench	5*25*90	1
151	Tool kit		1
152	Open spanner	10 opposite side	1
153	Hexagon wrench	6*30*84	1