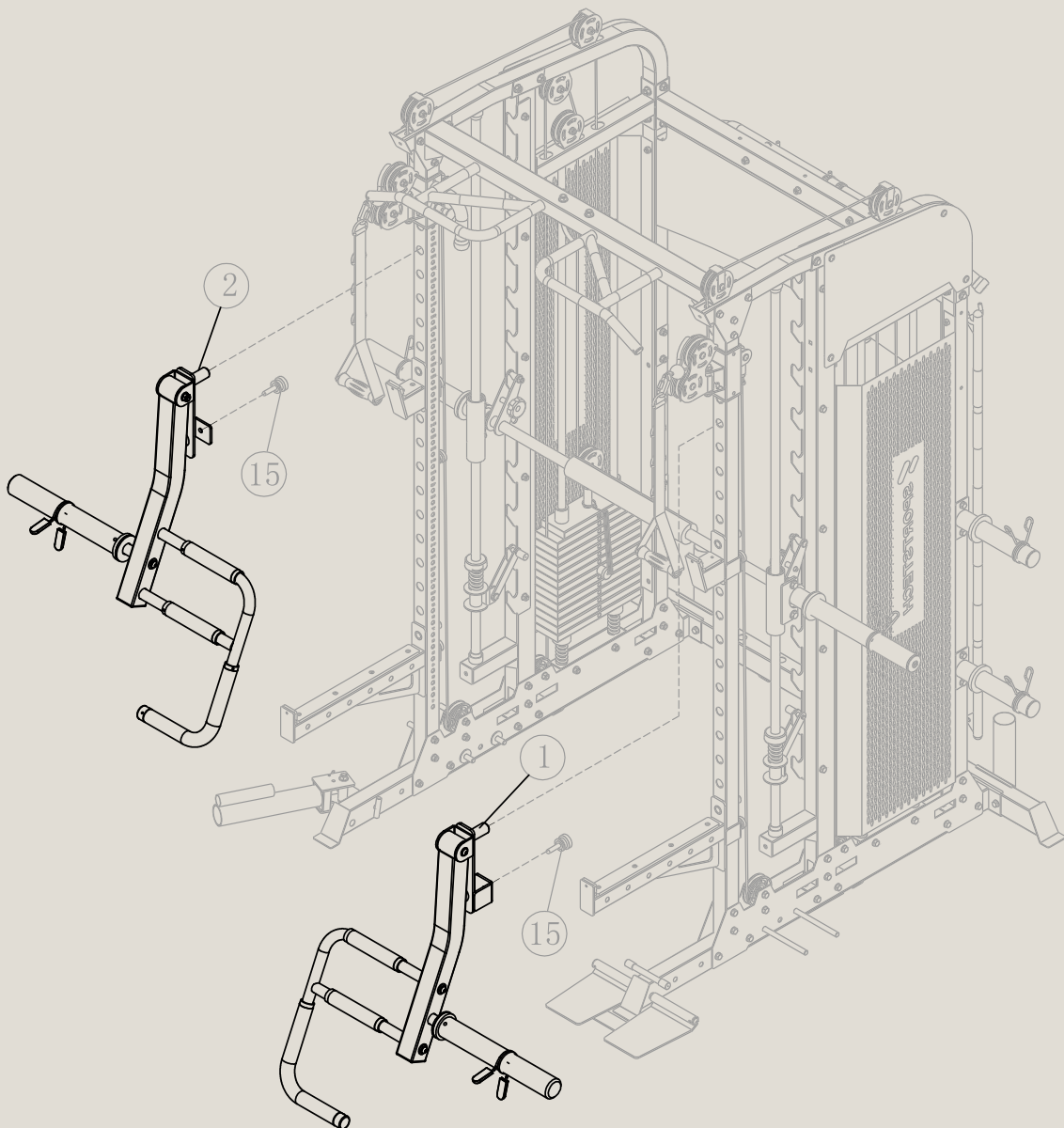


# SP\_SXM\_K\_JA

SMITH MACHINE ACCESSORY



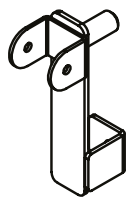
DE

EN

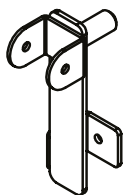
ES

FR

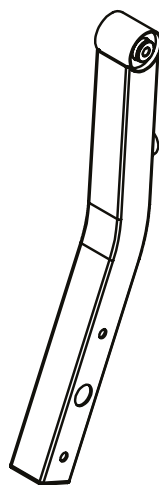
IT



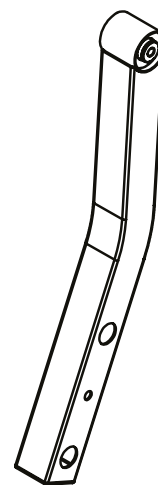
① × 1



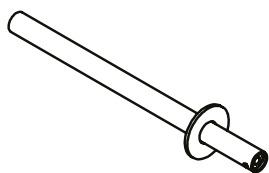
② × 1



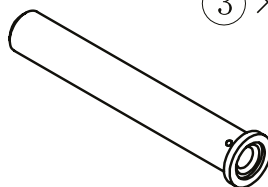
③ × 1



④ × 1



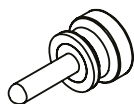
⑤ × 2



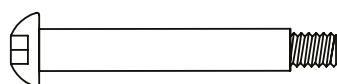
⑦ × 2



⑧ × 2



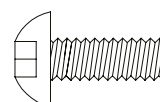
⑮ × 2



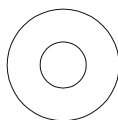
⑩ × 2



⑳ × 2



⑬ × 6



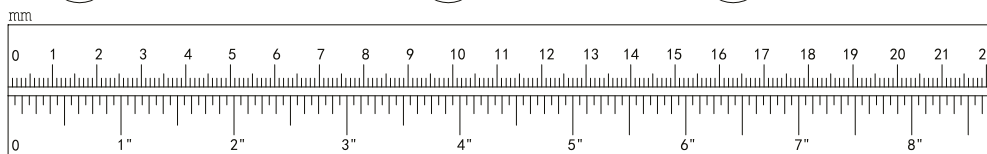
⑪ × 6



⑫ × 2



⑭ × 6

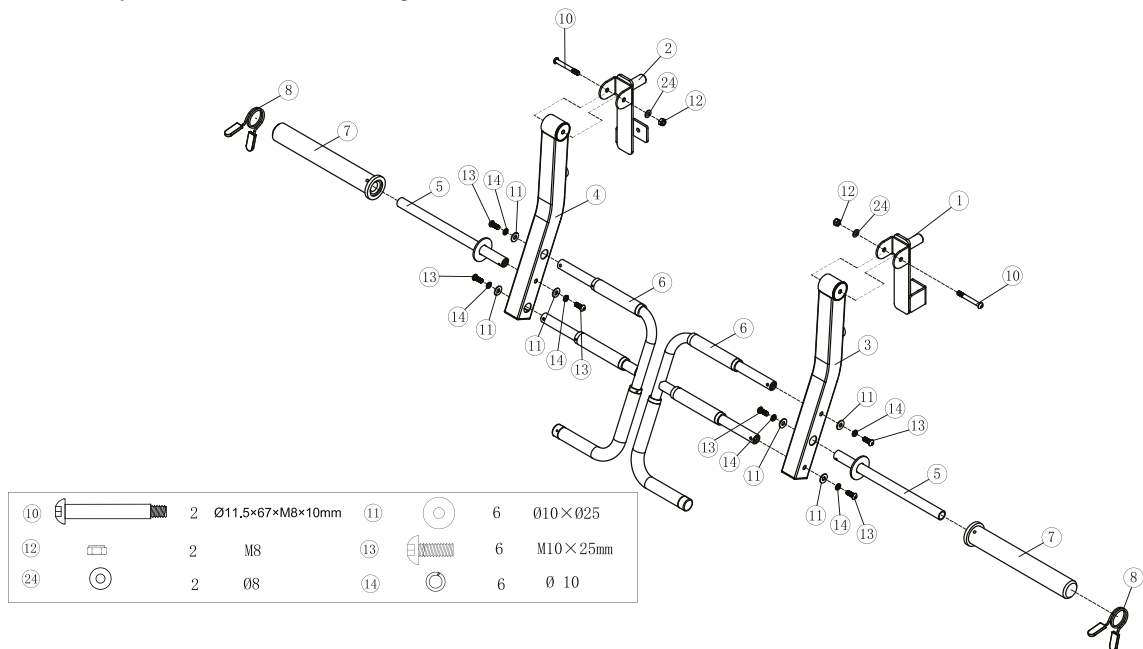


Diese Produkt ist geeignet für die Smith Machines SXM150 und SXM200.

# MONTAGEANLEITUNG

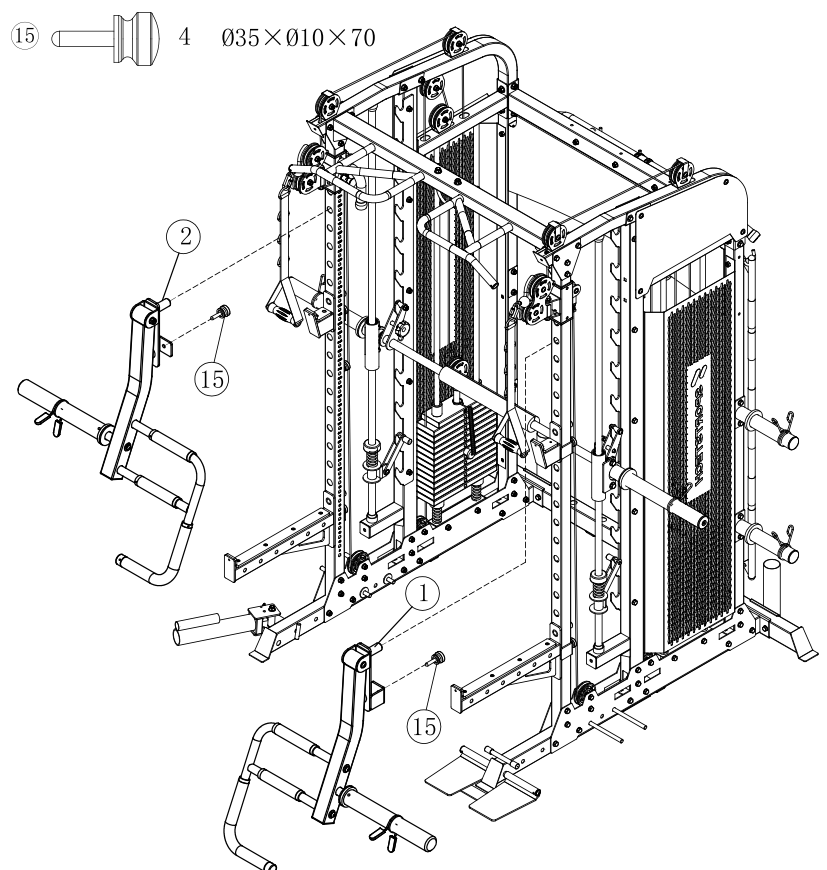
## Schritt 1

- Montieren Sie das linke und rechte Schwenkrohr (3#&4#) auf dem linken und rechten Sicherheitshaken (1#&2#) jeweils. Verbinden und fixieren Sie sie mit zwei Ø11.5×67×M8×10mm Inbusschrauben (10 #), vier Ø 8mm Unterlegscheiben (24 #) und zwei M8 Flügelmuttern (12 #).
- Montieren Sie jeweils zwei Druckgriffe (6 #) auf dem linken und rechten Schwenkrohr (3 #&4 #) und verwenden Sie vier M10×25mm Inbusschrauben (13 #), vier Ø 10mm Federringe (14 #) und vier Ø 10mm Unterlegscheiben (11 #) zum Verbinden und Befestigen.
- Montieren Sie jeweils zwei Druckgriffe (6 #) auf dem linken und rechten Schwenkrohr (3 #&4 #). Verbinden und fixieren Sie sie mit zwei M10×25mm Inbusschrauben (13 #), zwei Ø 10mm Federringen (14 #) und zwei Ø 10mm Unterlegscheiben (11 #).
- Montieren Sie zwei Gewichtshülsen (7 #) auf dem Druckgriff (6 #) und verriegeln Sie sie mit einem Inbusschlüssel.
- Montieren Sie jeweils zwei Federkragen (8 #) auf die Gewichtshülse (7 #).



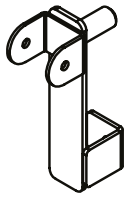
## Schritt 2

- Installieren Sie den linken Sicherheitsfang (1 #) an der linken Säule des Portals und verriegeln Sie ihn mit dem Magnetstift (15 #).
- Installieren Sie den rechten Sicherheitsfang (1 #) an der linken Säule des Portals und verriegeln Sie ihn mit dem Magnetstift (15 #).

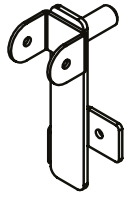


# Assembly

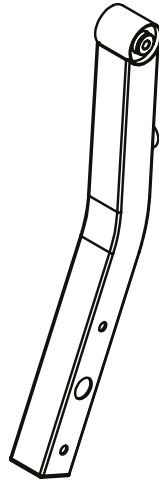
## COMPONENTS



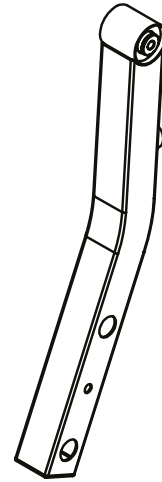
① × 1



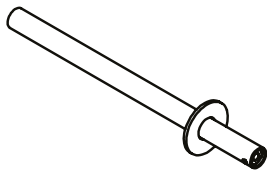
② × 1



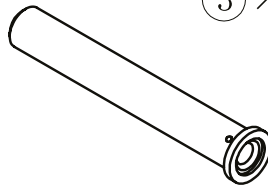
③ × 1



④ × 1



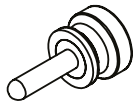
⑤ × 2



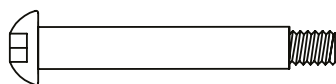
⑦ × 2



⑧ × 2



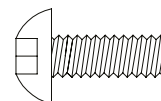
⑮ × 2



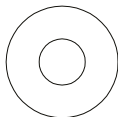
⑩ × 2



⑳ × 2



⑬ × 6



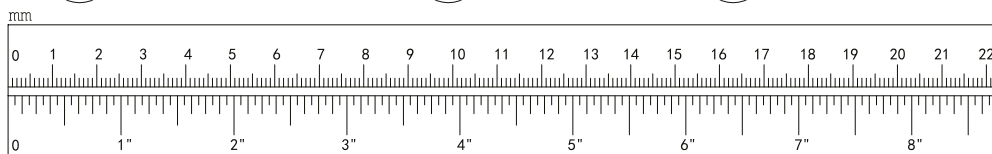
⑪ × 6



⑫ × 2



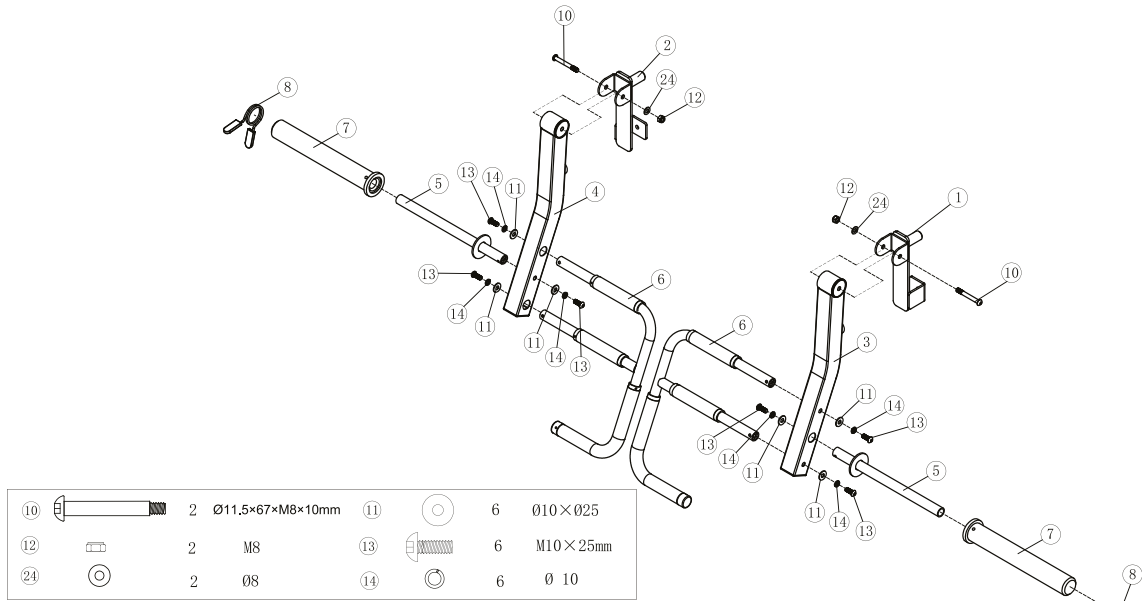
⑭ × 6



This product is suitable for the Smith Machines SXM150 and SXM200.

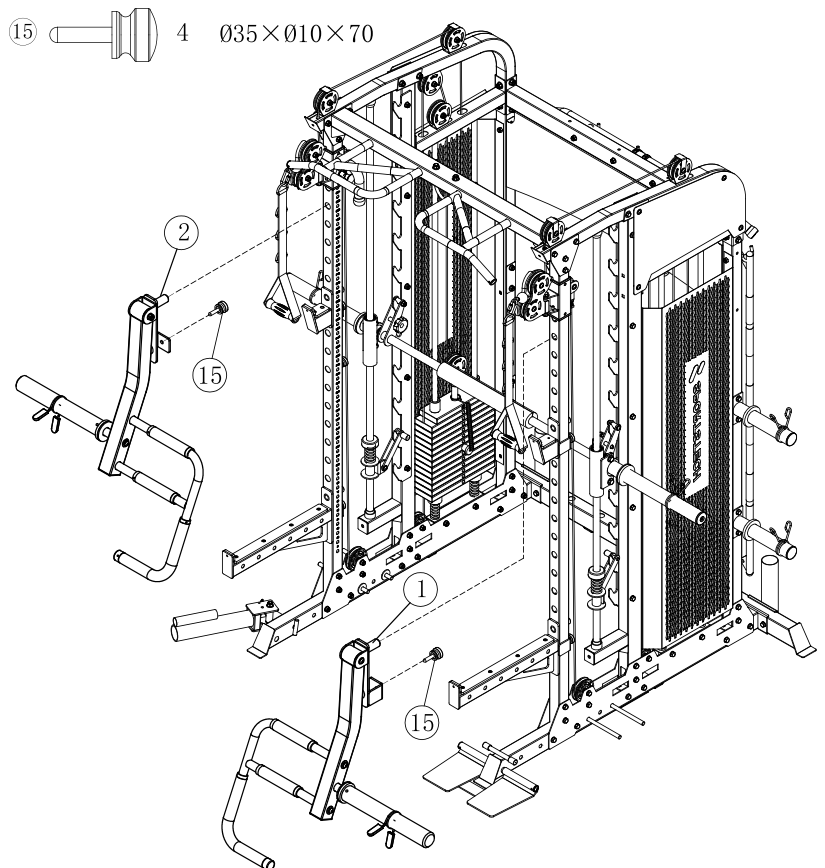
## Step 1

- Install the Left and Right swivel tube (3#&4#) on the Left and Right safety catch (1#&2#) respectively. And connect and fix them with two  $\varnothing 11.5 \times 67 \times M8 \times 10$ mm Allen Bolt (10 #), four  $\varnothing 8$ mm Washers (24 #), and two M8 Aircraft Nut (12 #)
- Install two Press handle (6 #) on the Left and Right swivel tube (3 #&4 #) respectively, and use four M10 $\times$ 25mm Allen Bolt (13 #), four  $\varnothing 10$ mm Spring washer (14 #), and four  $\varnothing 10$ mm Washers (11 #) to connect and fix them
- Install two Press handle (6 #) on the Left and Right swivel tube (3 #&4 #) respectively. And connect and fix them with two M10 $\times$ 25mm Allen Bolt (13 #), two  $\varnothing 10$ mm Spring washer (14 #), and two  $\varnothing 10$ mm Washers (11 #)
- Install two Weight sleeve (7 #) onto the Press handle (6 #) and lock them in place using an Allen wrench
- Install two Spring collar (8 #) onto the Weight sleeve (7 #) respectively

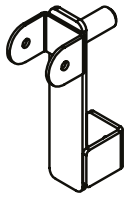


## Step 2

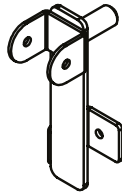
- Install the Left safety catch (1 #) onto the left column of the gantry and lock it in place with Magnetic Pin (15 #)
- Install the Right safety catch (1 #) onto the left column of the gantry and lock it in place with Magnetic Pin (15 #)



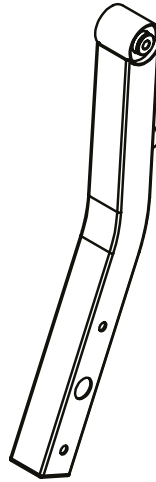
## COMPONENTES



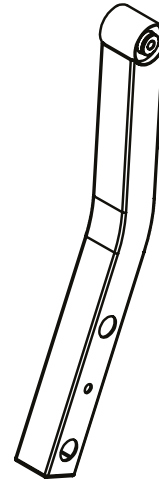
① × 1



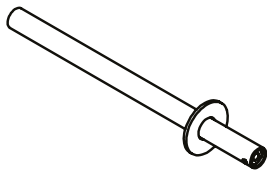
② × 1



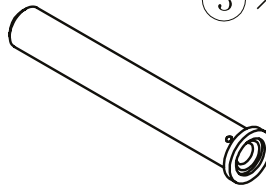
③ × 1



④ × 1



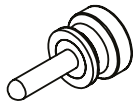
⑤ × 2



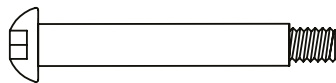
⑦ × 2



⑧ × 2



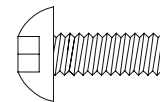
⑮ × 2



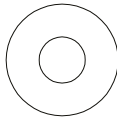
⑩ × 2



⑳ × 2



⑬ × 6



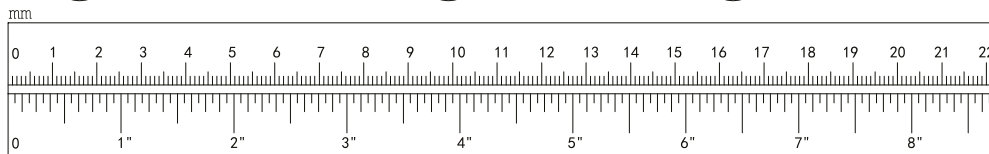
⑪ × 6



⑫ × 2



⑭ × 6

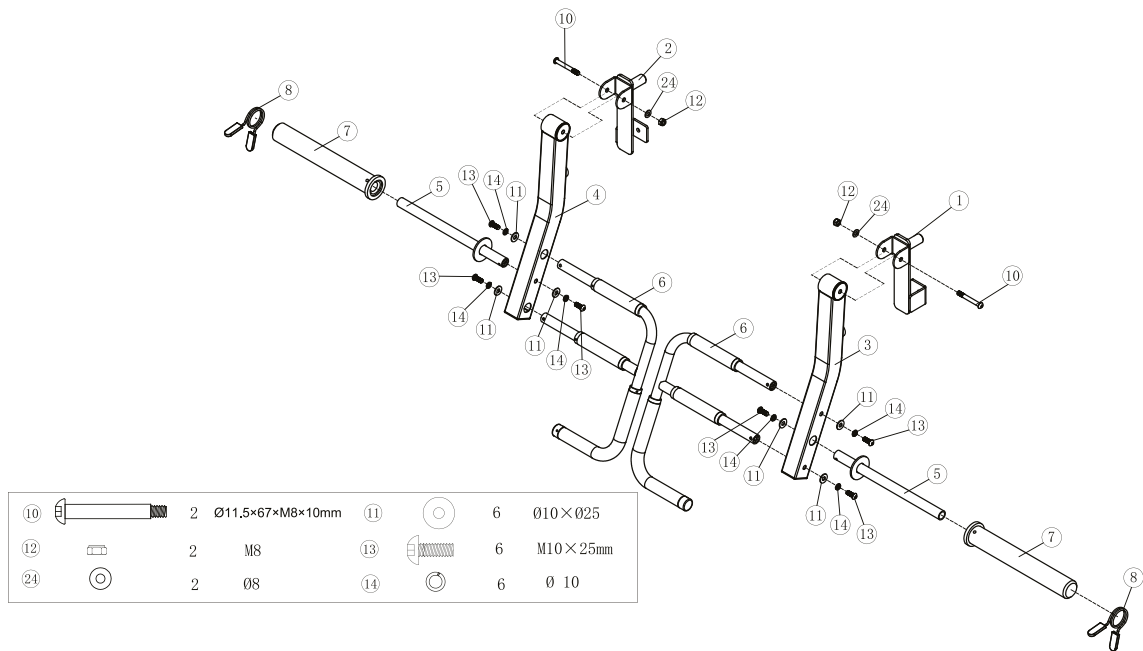


Este producto es adecuado para las máquinas Smith SXM150 y SXM200.

# INSTRUCCIONES DE MONTAJE

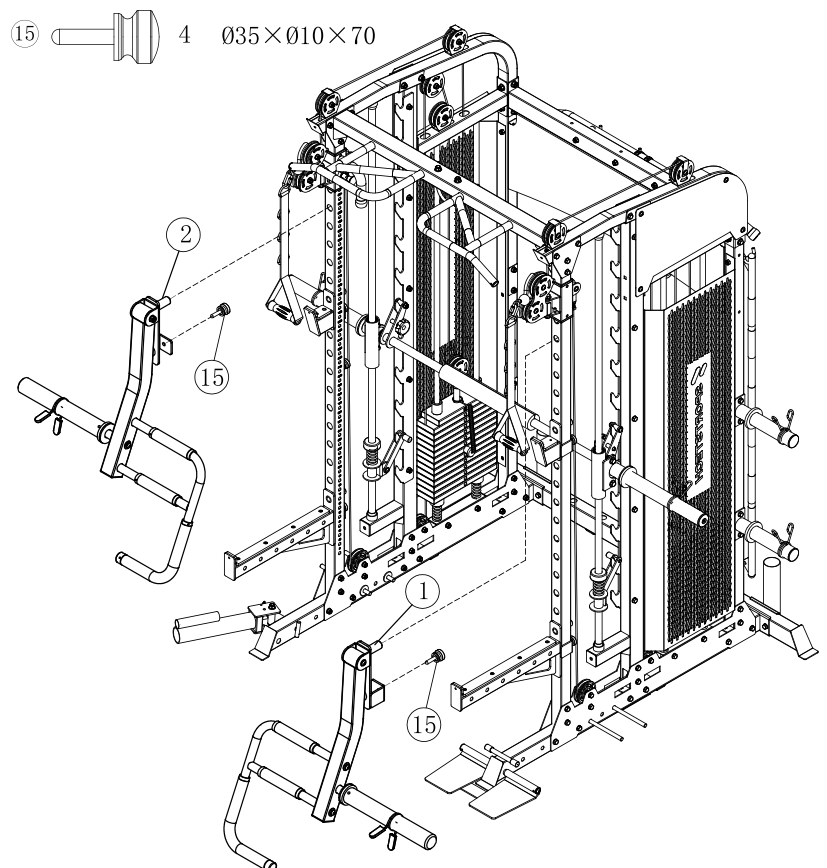
## Paso 1

- Instale el tubo giratorio izquierdo y derecho (3#&4#) en el seguro de seguridad izquierdo y derecho (1#&2#) respectivamente. Conéctelos y fíjelos con dos pernos Allen  $\varnothing 11.5 \times 67 \times M8 \times 10 \text{ mm}$  (10#), cuatro arandelas de  $\varnothing 8 \text{ mm}$  (24#) y dos tuercas para aviones M8 (12#).
- Instale dos manijas de prensa (6#) en el tubo giratorio izquierdo y derecho (3#&4#) respectivamente, y use cuatro pernos Allen M10 $\times$ 25 mm (13#), cuatro arandelas de resorte de  $\varnothing 10 \text{ mm}$  (14#) y cuatro arandelas de  $\varnothing 10 \text{ mm}$  (11#) para conectarlos y fijarlos.
- Instale dos manijas de prensa (6#) en el tubo giratorio izquierdo y derecho (3#&4#) respectivamente. Conéctelos y fíjelos con dos pernos Allen M10 $\times$ 25 mm (13#), dos arandelas de resorte de  $\varnothing 10 \text{ mm}$  (14#) y dos arandelas de  $\varnothing 10 \text{ mm}$  (11#).
- Instale dos mangas para pesas (7#) en la manija de prensa (6#) y asegúrelas en su lugar utilizando una llave Allen.
- Instale dos collares de resorte (8#) en la manga para pesas (7#) respectivamente.



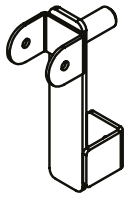
## Paso 2

- Instale el seguro de seguridad izquierdo (1#) en la columna izquierda del pórtico y asegúrelo en su lugar con el pasador magnético (15#).
- Instale el seguro de seguridad derecho (1#) en la columna izquierda del pórtico y asegúrelo en su lugar con el pasador magnético (15#).

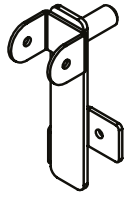


# Assemblage

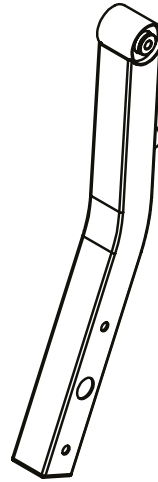
## COMPOSANTS



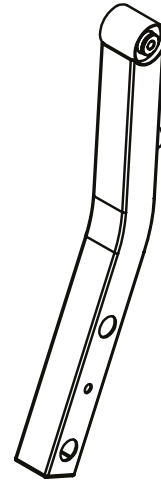
① × 1



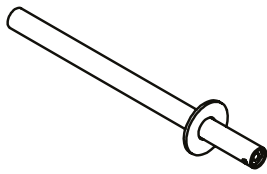
② × 1



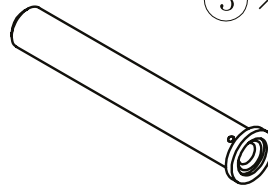
③ × 1



④ × 1



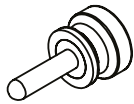
⑤ × 2



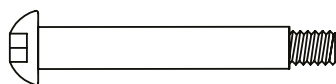
⑦ × 2



⑧ × 2



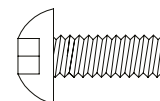
⑮ × 2



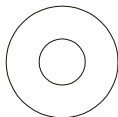
⑩ × 2



⑳ × 2



⑬ × 6



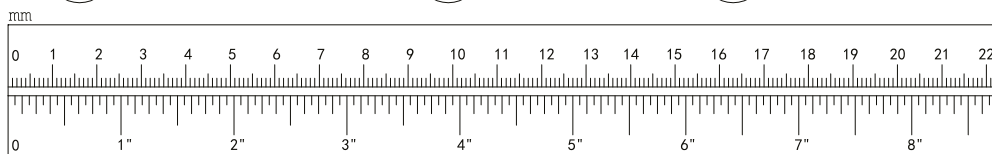
⑪ × 6



⑫ × 2



⑭ × 6

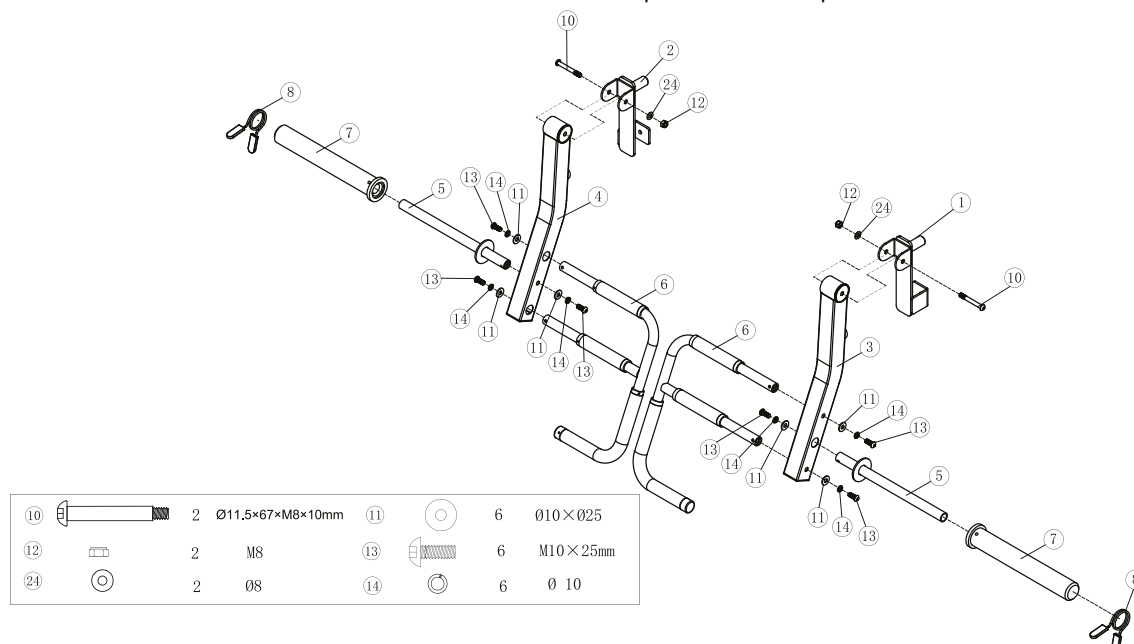


Ce produit est adapté aux machines Smith SXM150 et SXM200.



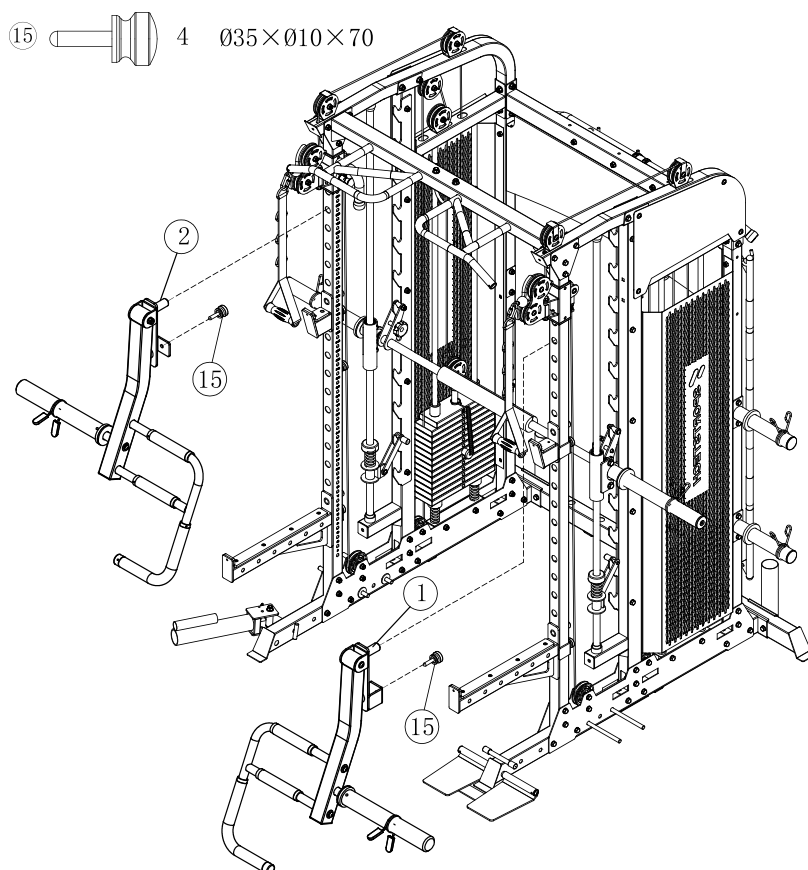
## Étape 1

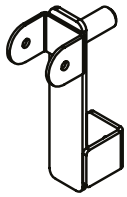
- Installer le tube pivotant gauche et droit (3# et 4#) sur le crochet de sécurité gauche et droit (1# et 2#) respectivement. Connectez-les et fixez-les avec deux boulons Allen  $\varnothing 11,5 \times 67 \times M8 \times 10 \text{mm}$  (10#), quatre rondelles  $\varnothing 8 \text{mm}$  (24#) et deux écrous aéronautiques M80 (12#).
- Installer deux poignées de presse (6#) sur le tube pivotant gauche et droit (3# et 4#) respectivement, et utilisez quatre boulons Allen M10 $\times$ 25mm (13#), quatre rondelles à ressort  $\varnothing 10 \text{mm}$  (14#) et quatre rondelles  $\varnothing 10 \text{mm}$  (11#) pour les connecter et les fixer.
- Installer deux poignées de presse (6#) sur le tube pivotant gauche et droit (3# et 4#) respectivement. Connectez-les et fixez-les avec deux boulons Allen M10 $\times$ 25mm (13#), deux rondelles à ressort  $\varnothing 10 \text{mm}$  (14#) et deux rondelles  $\varnothing 10 \text{mm}$  (11#).
- Installer deux manchons de poids (7#) sur la poignée de presse (6#) et les verrouiller en place à l'aide d'une clé Allen.
- Installer deux colliers à ressort (8#) sur le manchon de poids (7#) respectivement.



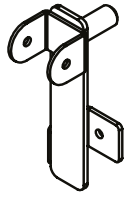
## Étape 2

- Installer le crochet de sécurité gauche (1#) sur la colonne gauche du portique et le verrouiller en place avec le pin magnétique (15#).
- Installer le crochet de sécurité droit (1#) sur la colonne gauche du portique et le verrouiller en place avec le pin magnétique (15#).

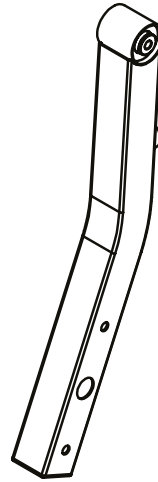




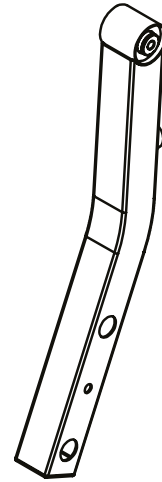
① × 1



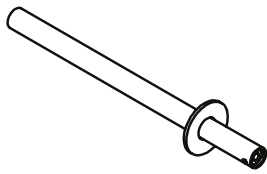
② × 1



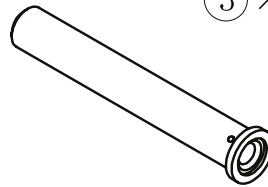
③ × 1



④ × 1



⑤ × 2



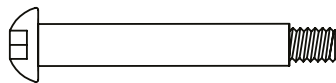
⑦ × 2



⑧ × 2



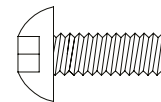
⑮ × 2



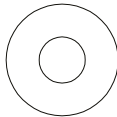
⑩ × 2



⑳ × 2



⑬ × 6



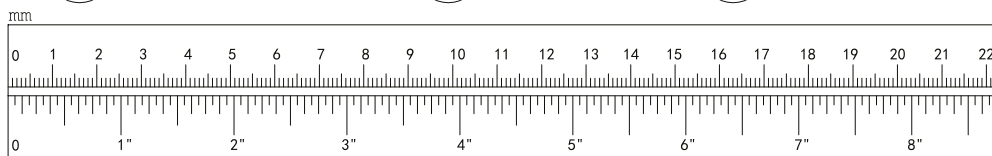
⑪ × 6



⑫ × 2



⑭ × 6

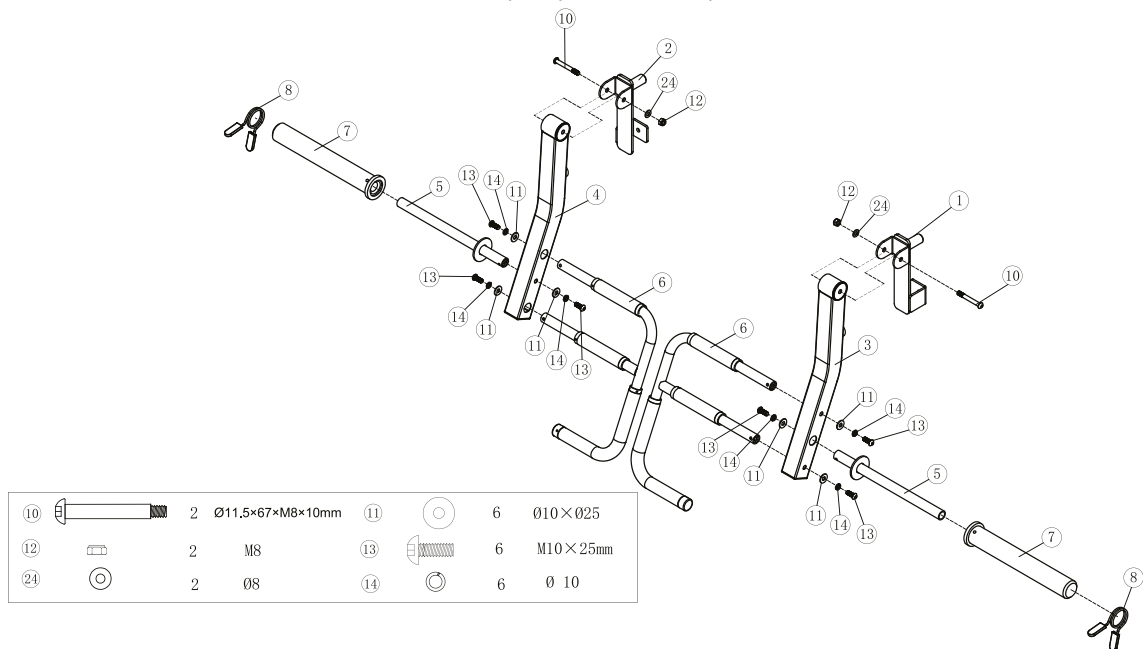


Questo prodotto è adatto per le macchine Smith SXM150 e SXM200.

# ISTRUZIONI DI MONTAGGIO

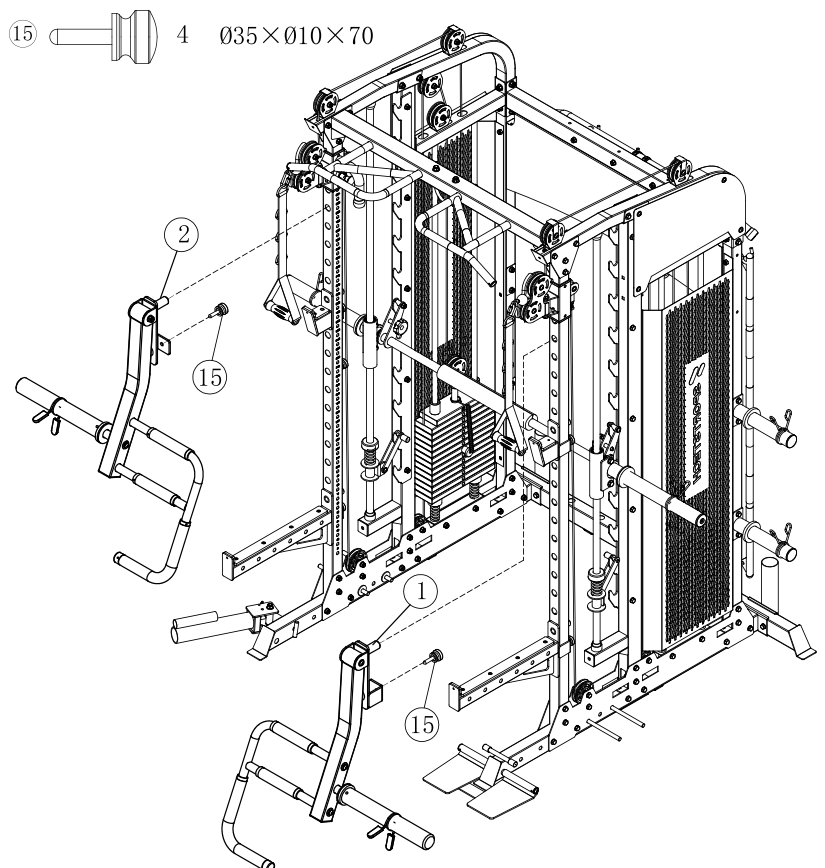
## Passo 1

- Installa il tubo girevole sinistro e destro (3# e 4#) sulla sicura sinistra e destra (1# e 2#) rispettivamente. E collegali e fissali con due bulloni esagonali  $\varnothing 11,5 \times 67 \times M8 \times 10 \text{mm}$  (10#), quattro rondelle  $\varnothing 8 \text{mm}$  (24#) e due dadi aerei M8 (12#).
- Installa due maniglie di pressione (6#) sui tubi girevoli sinistro e destro (3# e 4#) rispettivamente, e usa quattro bulloni esagonali M10 $\times$ 25mm (13#), quattro rondelle a molla  $\varnothing 10 \text{mm}$  (14#) e quattro rondelle  $\varnothing 10 \text{mm}$  (11#) per collegarli e fissarli.
- Installa due maniglie di pressione (6#) sui tubi girevoli sinistro e destro (3# e 4#) rispettivamente. E collegali e fissali con due bulloni esagonali M10 $\times$ 25mm (13#), due rondelle a molla  $\varnothing 10 \text{mm}$  (14#) e due rondelle  $\varnothing 10 \text{mm}$  (11#).
- Installa due manicotti per pesi (7#) sulle maniglie di pressione (6#) e bloccali in posizione usando una chiave esagonale.
- Installa due collari a molla (8#) sui manicotti per pesi (7#) rispettivamente.



## Passo 2

- Installa la sicura sinistra (1#) sulla colonna sinistra del ponte e bloccalo in posizione con il perno magnetico (15#).
- Installa la sicura destra (1#) sulla colonna sinistra del ponte e bloccalo in posizione con il perno magnetico (15#).










**Sportstech  
Fitness**

<https://www.sportstech.de/>

**Verkauf durch / Distributed by / Distribuido por / Distribué / Distribuito da / Verkoop via**

 Sportstech Brands Holding GmbH  
Karl-Liebknecht-Str. 7  
10178 Berlin, Germany  
 [www.sportstech.de](http://www.sportstech.de)

 030 88 62 6446  
SERVICE:  [service@sportstech.care](mailto:service@sportstech.care)  
 [www.sportstech.care](http://www.sportstech.care)

